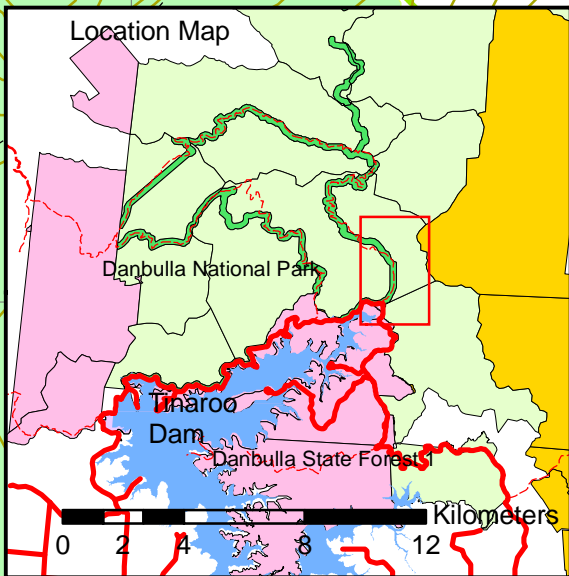


145°37'30"E

145°38'0"E

# TERN Robson Creek Supersite

Danbulla National Park



17°6'30"S

17°6'30"S

17°7'0"S

17°7'0"S

17°7'30"S

17°7'30"S

17°8'0"S

17°8'0"S

Mt Edith Road

The Breach

*Litoria genimaculata*

*Litoria genimaculata*  
*Taudactylus acutirostris*

EXP 293

*Pseuduvaria mulgraveana* var. *glabrescens*  
*Caesalpinia robusta*

EXP 293

*Caesalpinia robusta*

TERN Plot

Danbulla National Park

National Park Recovery  
Danbulla Forest Drive

*Litoria genimaculata*

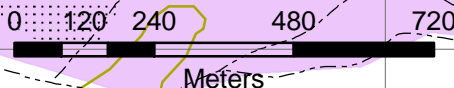
Map Projection: nil  
Horizontal datum: Geocentric Datum of Australia 1994 9GDA940

Map Production:  
Spatial Services  
Queensland Parks and Wildlife Service  
Department of Environment and Resource Management  
7 September 2009

Disclaimer:  
This map has been prepared for the purposes of discussion and comment. While the map has been prepared with care, neither the Queensland Government nor the Department of Environment and Resource Management accepts any liability for any decisions or actions taken by individuals or organisations on the basis of this map.

Accuracy Statement:  
Due to varying source, accuracy or currency of data layers used in this map. The spatial locations of features may not coincide when overlaid.

Source Material:



## Legend

Y R & T Species Records

### Roads

- 2wd All Weather
- 4wd All Weather
- untrafficable
- plantation
- Silvicultural Treated
- Rivers
- Contours

### Logging Date

- 1960-1964
- 1964-1969
- Inaccessible



Queensland Government

145°37'30"E

145°38'0"E