



TERN
AusPlots

TERN AusPlots Summary of Plots on Calperum

September 2012- April 2015



Ral Ral Creek, Calperum SA



tern.org.au | tern@uq.edu.au | +61 (0)7 3365 9097



Supported by

NCRIS
National Research
Infrastructure for Australia
An Australian Government Initiative

In partnership with





Acknowledgments

AusPlots gratefully acknowledges the staff of the Australian Landscape Trust, in particular Peter Cale and Len Davis for their help and support of the project. Thanks also to the many volunteers who helped to collect, curate and process the data and samples. Thank you to the South Austrlian herbarium for undertaking the plant identifications.

Contents

Introduction.....	1
Accessing the Data.....	3
Point intercept data	3
Plant collections	3
Leaf tissue samples.....	3
Site description information	3
Structural summary.....	3
Leaf Area Index	3
Basal area.....	4
Soil classification	4
Soil meta barcoding samples	4
Soil bulk density	4
Co-location with existing plots.....	4
3D photo panorama	5
Regional Context.....	9
Uses of AusPlots Data from Calperum.....	13
Assessing drought sensitivity in plants using stable carbon isotopes	Error! Bookmark not defined.
Potential decoupling of plant and ant communities under climate change	Error! Bookmark not defined.
Opportunities for Integrated Ecological Analysis across Inland Australia with Standardised Data from Ausplots Rangelands	13
Floristic and structural assessment of Australian rangeland vegetation with standardized plot based surveys	13
Variation in chain-length of leaf wax n-alkanes in plants and soils across Australia	Error! Bookmark not defined.
The Biomes of Australian Soil Environments.....	Error! Bookmark not defined.
The extent of forest in dryland biomes	14
Herbarium Collections.....	14
For more information	Error! Bookmark not defined.
Appendices.....	15
Appendix 1. Summary of AusPlots data and samples from Calperum	15
Appendix 2. Plot locations	16
Appendix 3. Point intercept data	17
Appendix 4. Substrate and growth form	20
Appendix 5. Structural Summary.....	24
Appendix 7. Soil Classification.....	26
Appendix 7. Plant collection.....	31

Introduction

In September 2012, AusPlots, part of the Terrestrial Ecosystems Research Network (TERN), undertook a survey on Calperum, South Australia. The surveys involved vegetation and soils work following the AusPlots Rangelands methodology, with 18 plots completed. The plot is part of over 580 plots completed nationally. Figure 1 shows the national AusPlots plot network, and Figure 2 shows the locations of the plots on Calperum.

This report provides a snapshot of some of the data which was collected during the survey work. A more detailed description of the methods used can be found online in our *AusPlots Rangelands Survey Protocols Manual* (White *et al.* 2012), available from our website www.AusPlots.org.

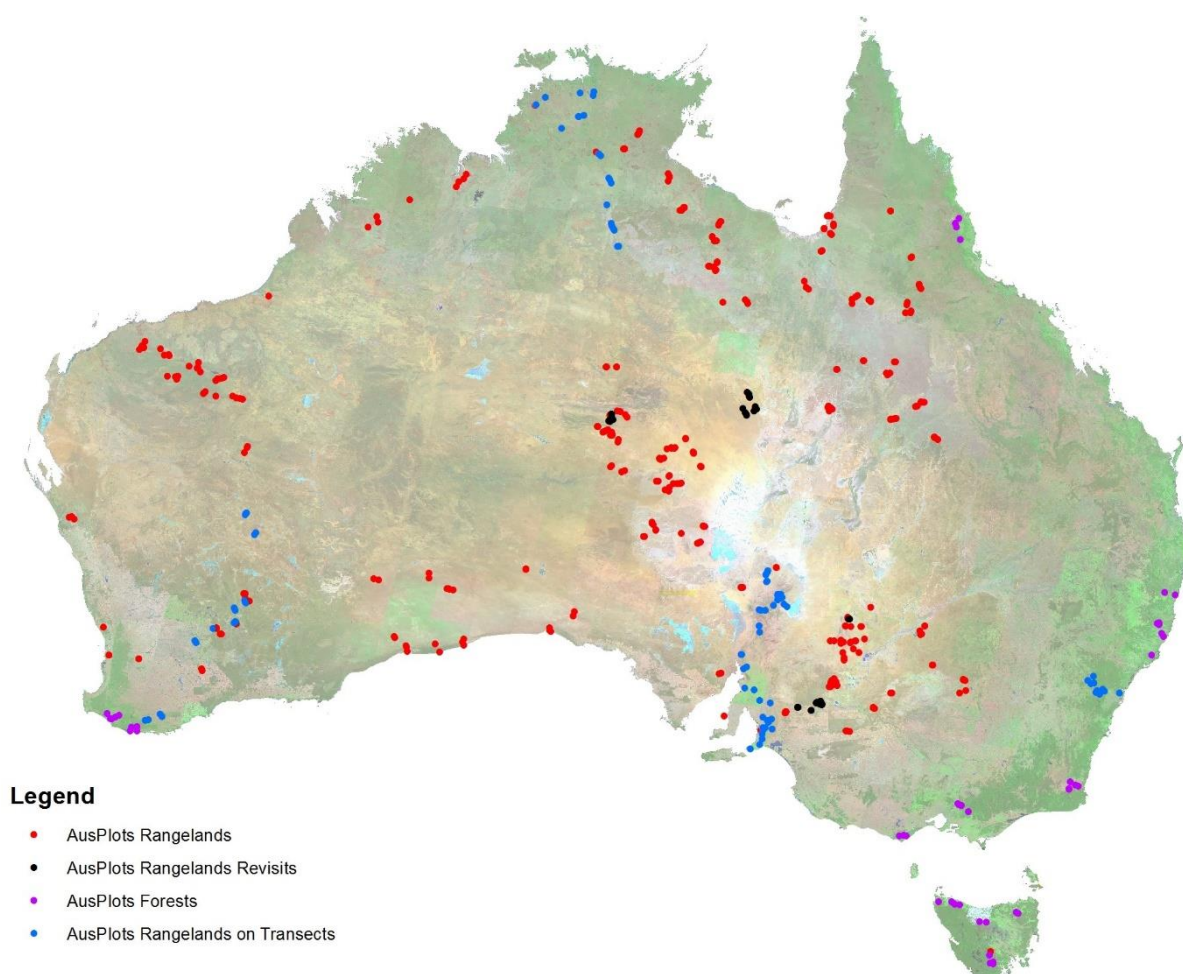


Figure 1. AusPlots plot network

LandSat Image used courtesy of the Commonwealth Department of the Environment

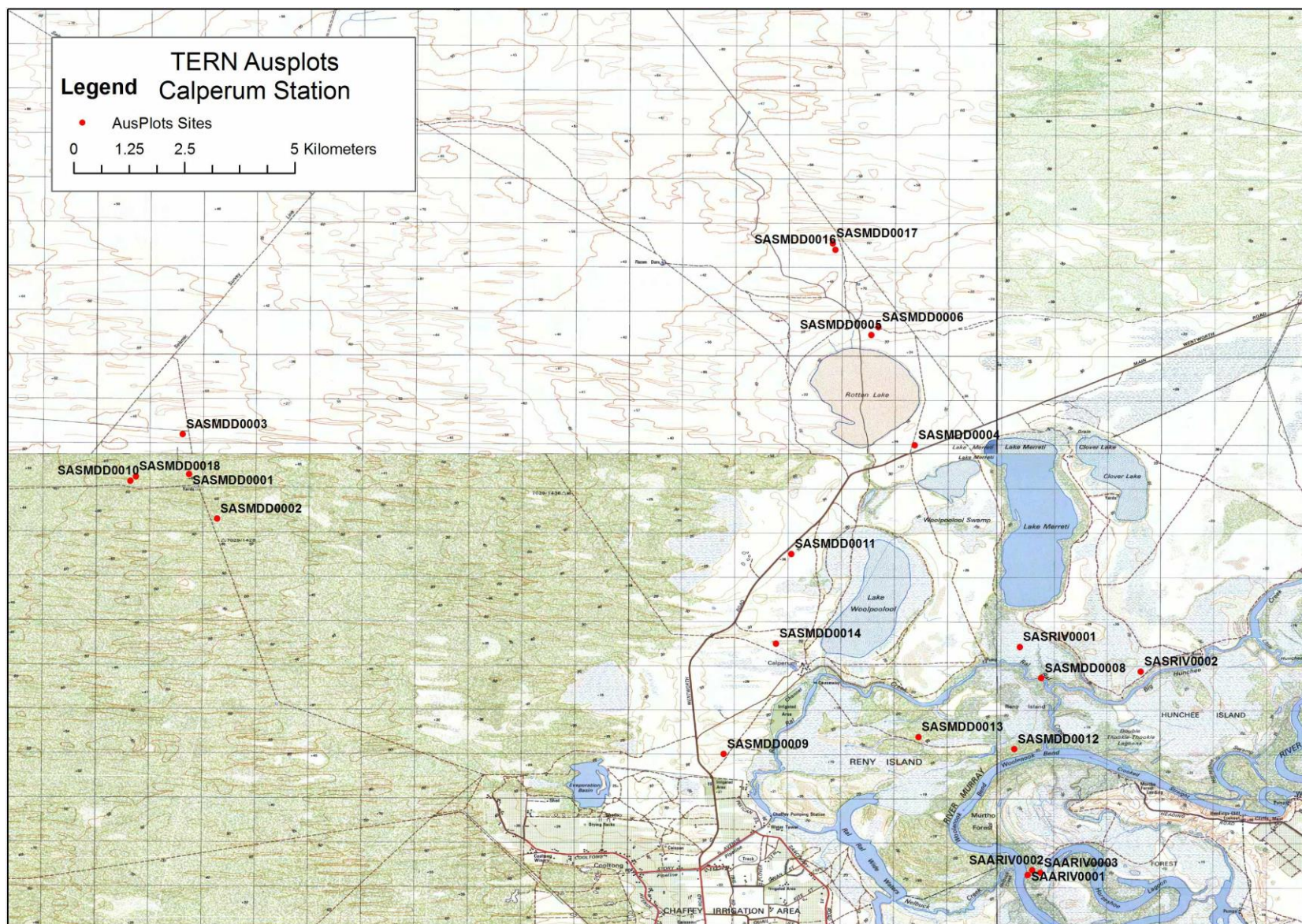


Figure 2. AusPlots Rangeland plot location on Calperum

Topographic data (c) Copyright 1999. Department for Environment, Water and Natural Resources, South Australia.

Accessing the Data

All of the data the AusPlots collects is freely available online through the AEKOS data portal at www.aekos.org.au. It can also be viewed on the Soils to Satellites website which contains a range of useful visualisations sourced from the Atlas of Living Australia. At <http://www.soils2satellites.org.au/>.

Point intercept data

The point intercept method is a straightforward method that is readily repeatable and requires little instruction to produce reliable plot information. It provides accurate benchmark data at each plot including substrate type and cover; as well as species structural information such as growth form, height, cover and abundance and population vertical structure. The demographic information produced at each plot can be compared spatially to indicate plot differences, and temporally to indicate change over time. Additionally, the cover data collected at each plot can be used to validate cover data extrapolated through remote sensing techniques.

Plant collections

Each species that is found within the plot has a herbarium grade sample taken. These have all been formally identified by the SA Herbarium. Much of the material is then lodged at the SA Herbarium or at the AusPlots facility in Adelaide.

Leaf tissue samples

All of the above samples also have leaf tissue samples taken. This involves placing leaf samples from each species into a cloth bag and drying them on silica desiccant. All of the dominant species have an extra 4 samples collected. These samples are available for use on application to AusPlots facility in Adelaide. They are able to be used for genetic analysis, isotopic composition and range of other uses.

Site description information

Contextual information is also collected at each plot. This includes measures of slope and aspect, surface strew and lithology, and information on the grazing and fire history of the site. The plots location is also recorded with a differential GPS and the plot corners and centres (with landholder permission) marked with a star picket.

Structural summary

Detailed structural summary information is also collected at each plot. When combined with the height and cover information from the point intercept data it enables the creation of structural description compatible with and NVIS level 5 description.

Leaf Area Index

In plots where a mid and/or upper canopy is present a measure of Leaf Area is recorded. The tool used is an LAI-2200 and it captures LAI measurements in a range of canopies using one or two sensors attached to a single data logger (LI-COR 1990). The LAI data has a range of potential application such as studies of canopy growth, canopy productivity, woodland vigour, canopy fuel load, air pollution deposition, modelling insect defoliation, remote sensing, and the global carbon cycle.

Basal area

Basal area measurements are collected across plots where woody biomass is taller than 2 m. Basal area measurements provide information useful for calculating biomass and carbon levels and for structural studies. The wedge aperture, the length of string – 50 cm (and hence the distance from the eye and subsequent angle from the eye to the edges of the wedge aperture) and species count are all important in calculations. Algorithms developed for use with the basal wedge include the above data to calculate plant basal area on a per hectare basis even though species are counted outside the one-hectare plot area. The method is plotless but used because it is based on the concept of circles (trunks/basal area) within circles (circular plots) – the area of one varies proportionally to the change in the area of the other. Use of the basal wedge may be superseded by further improvement of the 3D photo point method and development of algorithms to provide information on vegetation community structure.

Soil classification

Description of soils, including basic information on the information that has been recorded, the number of recordings and the coverage of locations, are generally poor across the rangelands region of Australia. The plot descriptions and soil characterisations collected by AusPlots will substantially alleviate this paucity of information. The data collected can also be used to increase the reliability of the rangelands component of the [Soil and Landscape Grid of Australia](#), produced by the TERN facility consistent with the [Global Soil Map](#) specifications. Analyses of the collected samples will greatly enhance the level of knowledge (e.g. nutrient and carbon levels) and hence understanding of rangelands soils and how they will respond to climate change and management options. It is hoped to eventually be able to analyse all nine of the soil pits from within the plot using a number of different methods e.g. wet chemistry, MIR or NIR (mid infrared spectrometry or near infrared spectroscopy) either individually to provide a measure of variation of the parameter being measured across a plot or bulked together and a sub-sample extracted and analysed to provide a mean value for that parameter across a plot.

Soil meta barcoding samples

Metagenomics is the study of genetic material recovered directly from environmental samples. Soil metagenomics provides the opportunity to understand what organisms are present at survey plots and provides an indication on their abundance. The collection techniques result in a bias towards higher order organisms. The AusPlots on Calperum has soil meta barcoding samples collected.

Soil bulk density

The soil bulk density (BD), also known as dry bulk density, is the weight of dry soil divided by the total soil volume. The total soil volume is the combined volume of solids and pores which may contain air or water, or both. The average values of air, water and solids in the sample are easily measured and are a useful indication of a soils physical condition. Soil test results are most often presented either as a percentage of soil (e.g. % organic carbon) or as a weight per unit of soil (e.g. nitrogen, mg/kg). As bulk density is a measure of soil weight in a given volume, it provides a useful conversion from these units to an area basis unit (e.g. t/ha). The resulting number gives an easily understandable idea of the carbon storage or nutritional status of the soil on an area basis.

Co-location with existing plots

AusPlots works on a mix of both new plots (where this is little existing monitoring infrastructure) and co-location with existing plots. The Plots on Calperum are co-located with TERNs Mallee supersite and plots SASMDD0001,2,3 and 18 sit within the footprint of the flux tower. These sites also have additional data including diameter at breast height measurements and terrestrial lidar (both before and after the fire in 2014) which is available. Several of the plots on Calperum were also used for trialing of the AusPlots fauna protocols and methods in 2015.

3D photo panorama

AusPlots uses a three-dimensional method for photographing the site. This involves taking three 360-degree panoramas in a triangular pattern. This allows for the creation of a 3D model of the vegetation within the plot which can be used to monitor change over time, track plot condition as well as providing a unique, fast measurement of basal area and biomass. A subset of these photo panoramas is shown below.



SASMDD0001: 1st Visit (2012)



SASMDD0001: 3 weeks post fire



SASMDD0002 (2012)



SASMDD0003: 1st visit (2012)



SASMDD0003: Revisit (2015)



SASMDD0004: 1st Visit (2012)



SASMDD0004: Revisit (2015)



SASMDD0005: 1st Visit (2012)



SASMDD0005: Revisit (2015)



SASMDD0006: 1st visit (2012)



SASMDD0006: Revisit (2015)



SASMDD0008: Revisit (2015)



SASMDD0010: 1st visit (2012)



SASMDD0011: 1st visit (2012)



SASMDD0011: Revisit (2015)



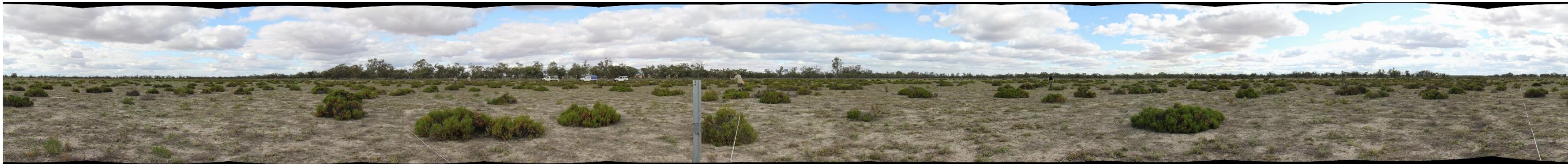
SASMDD0012: Revisit (2015)



SASMDD0013: 1st visit (2013)



SASRIV0001: 1st visit (2015)



SASRIV0002: 1st Visit (2015)

Regional Context

SA Murray Darling Basin NRM Region Land Use

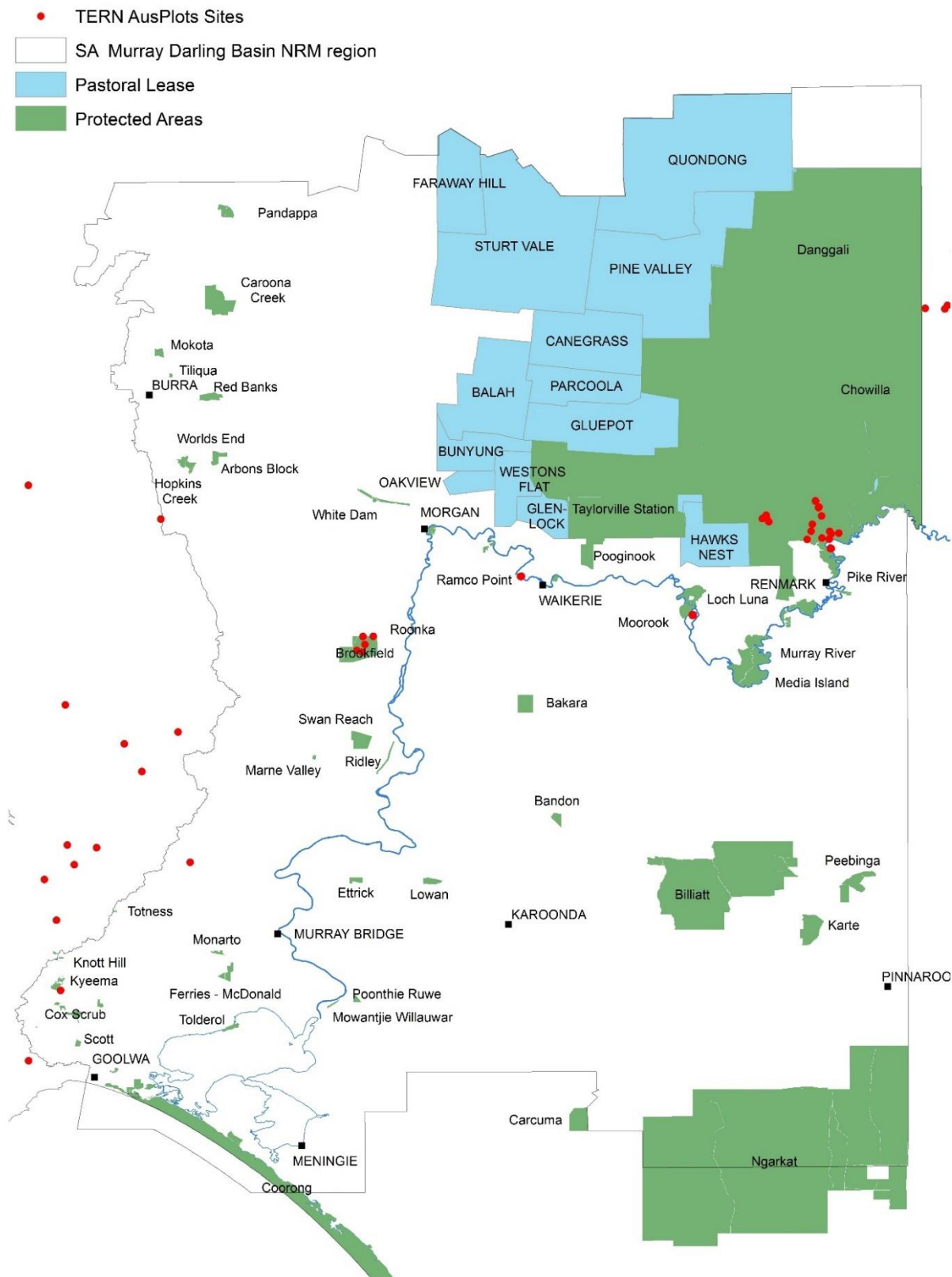


Figure 3. AusPlots Rangelands plot locations close to Calperum

Topographic data copyright Geoscience Australia and South Australian Government

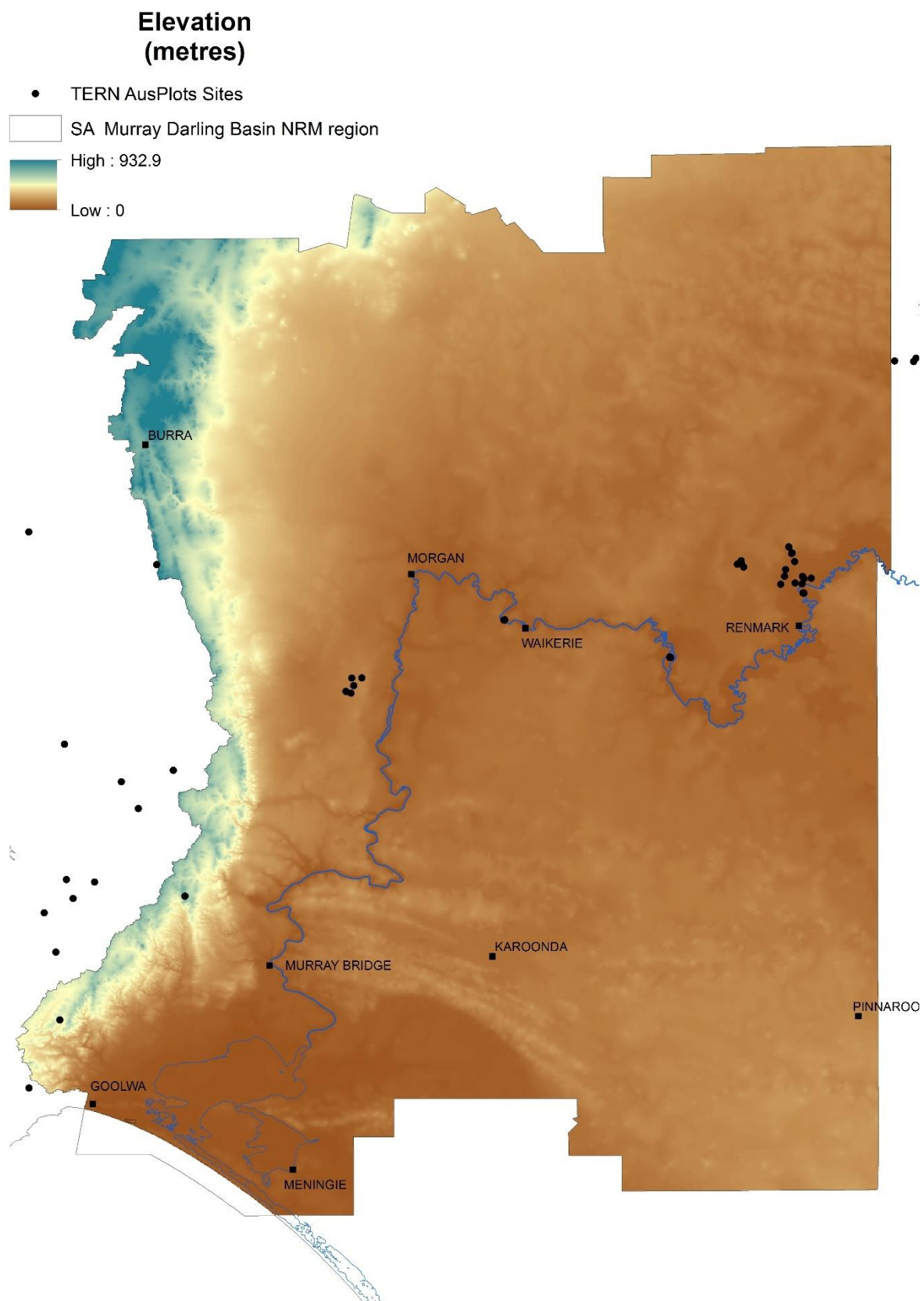


Figure 4. Modelled 9s elevation

Data from: Xu and Hutchinson, 2011. ANUCLIM Version 6.1. Fenner School of Environment and Society, Australian National University, Australia.

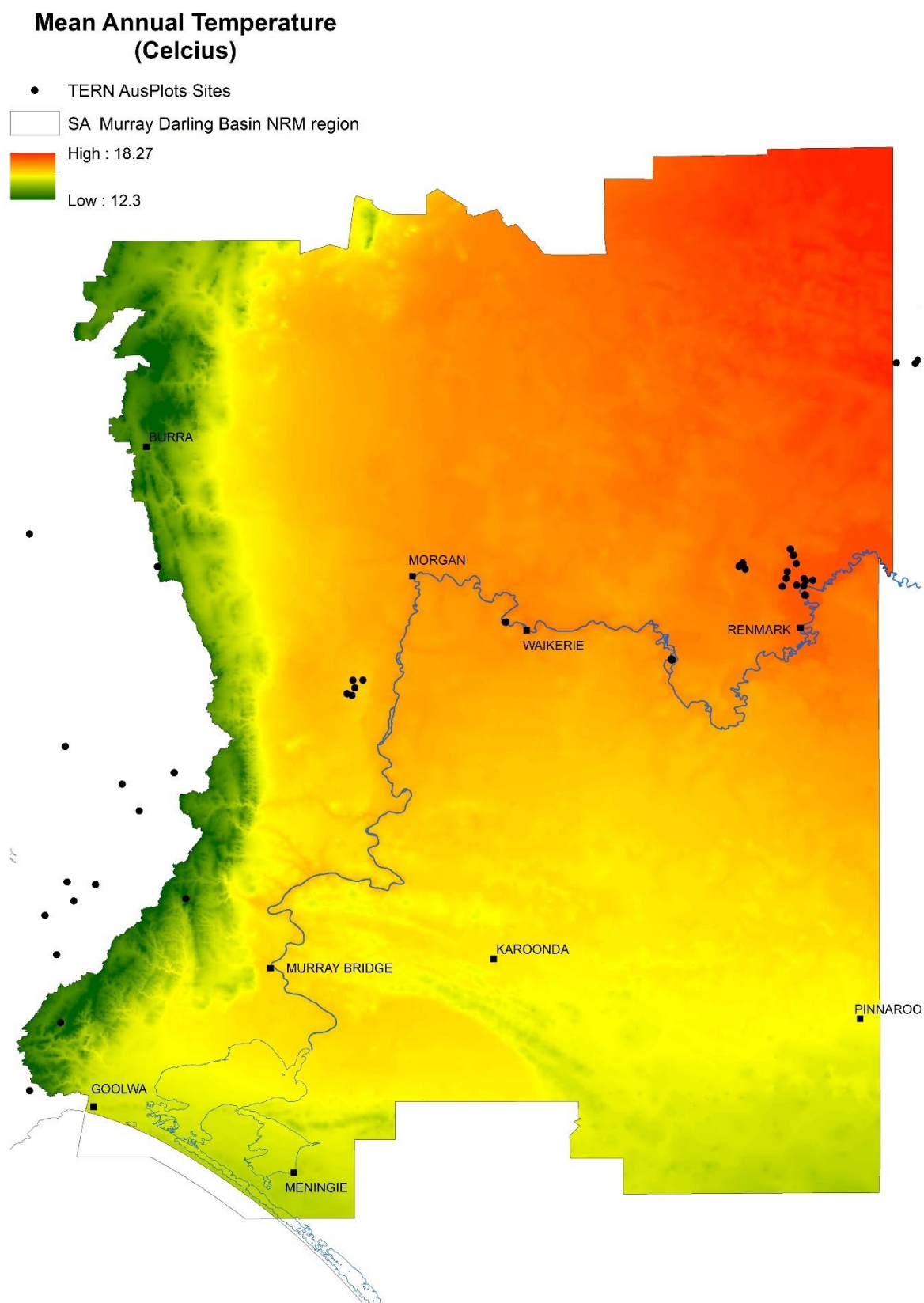


Figure 5. Mean annual temperature

Data from: Xu and Hutchinson, 2011. ANUCLIM Version 6.1. Fenner School of Environment and Society, Australian National University, Australia.

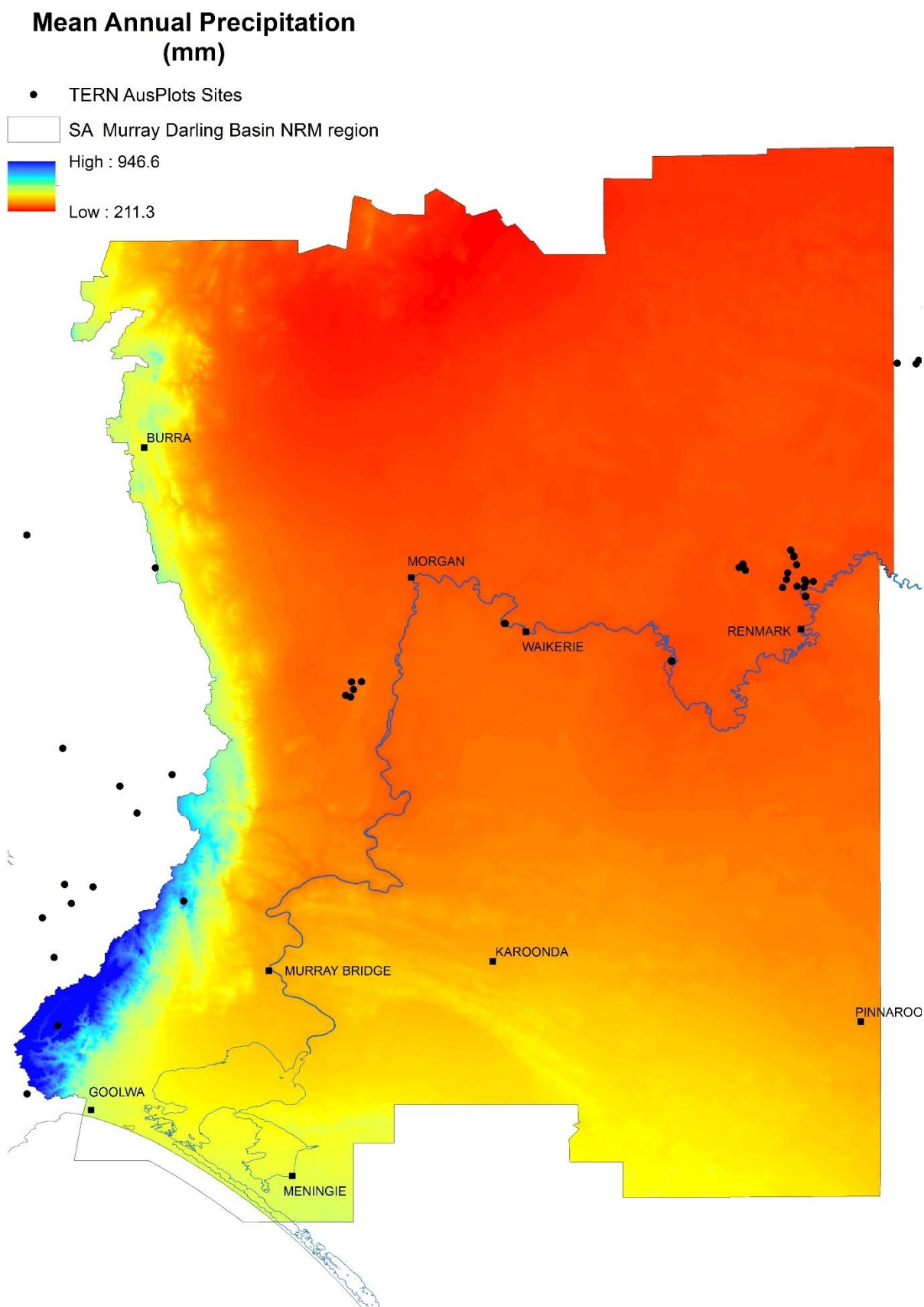


Figure 6. Mean annual precipitation

Climate Data from: Xu and Hutchinson, 2011. ANUCLIM Version 6.1. Fenner School of Environment and Society, Australian National University, Australia.

Potential Uses for AusPlots Data from Calperum

The AusPlots survey method was developed out of a dire need for consistent, national scale ecological data and surveillance monitoring. As such, the data can be used in a range of ways both on Calperum but also to allow comparisons across the continent. Currently, a range of researchers and land managers make use of the data and samples. Some example applications that may be applicable within the region are listed below.

- Assessing vegetation change using the AusPlots methodology as both a baseline and a continued surveillance monitoring tool.
- Detecting the impact of invasive species based on soil and vegetation data.
- Ground-truthing satellite derived vegetation and soil data
- Soil carbon analysis using the soil bulk density samples
- Mapping soil phosphorus, nitrogen and other nutrients using soil pit and subsite samples
- Assessing fuel loading using the basal area and leaf area data.
- Use of the leaf tissue samples for genetic and isotopic analysis.

For more information

More information on the AusPlots facility can be found on our website www.AusPlots.org

For more information regarding the survey work in The South Australian Murray Darling Basin NRM Region and assistance downloading and utilising the data from *AEKOS* and *Soils2Satellites* contact Emrys Leitch, AusPlots Field Survey Officer, emrys.leitch@adelaide.edu.au

For more information regarding the AusPlots facility, contact Ben Sparrow, AusPlots Director, ben.sparrow@adelaide.edu.au

Current Uses of AusPlots Data from Calperum

Some of the projects that have made use of the data and samples from Calperum site are listed below.

Opportunities for Integrated Ecological Analysis across Inland Australia with Standardised Data from Ausplots Rangelands (*Greg Guerin*)

How species abundance distributions (SADs) vary over climatic gradients is a key question for the influence of environmental change on ecosystem processes. Greg Guerin is a researcher based at the University of Adelaide. He has found linear relationships between SAD shape and rainfall within grassland and shrubland communities, indicating more uneven abundance in deserts and suggesting relative abundance may shift as a consequence of climate change, resulting in altered diversity and ecosystem function.

Floristic and structural assessment of Australian rangeland vegetation with standardized plot based surveys (*Zdravko Baruch*)

Vegetation classification at a continental scale has been lacking over the rangelands in Australia due to a lack of consistent data beyond state and regional levels. Zdravko undertook an integrated and comparative environmental, floristic and structural description of rangeland vegetation based on the AusPlots Surveys. His results offer a tentative classification scheme that is novel, ecologically sound and coherent in terms of floristic composition and structural attributes.



The extent of forest in dryland biomes (Jean-Francois Bastin)

The vegetation cover data from Calperum was also part of a recent mapping project undertaken by the Food and Agriculture arm of the UN. They were able to show that in 2015, 1327 million hectares of drylands had more than 10% tree-cover, and 1079 million hectares comprised forest. Their estimate is 40 to 47% higher than previous estimates, corresponding to 467 million hectares of forest that have never been reported before. This increases current estimates of global forest cover by at least 9%.

Herbarium Collections

The AusPlots program works very closely with state and national herbaria to help augment their collections to enable research and to better understand species distributions. Located in valuable areas of native vegetation, the plant collections made on Calperum have been eagerly accepted by the South Australian and National Herbarium. These specimens are currently being professionally mounted and preserved and will form a permanent part of their collection, which is available to botanical researchers globally to support ongoing research.

Appendices

Appendix 1. Summary of AusPlots data and samples from Calperum

AusPlots Data and Samples	Count
Total Collections	997
Total Leaf Tissue Samples	1523
Total number of soil samples	430
Total weight of soil (kg)	430
Number of sites with Bulk Density data	14
Number of Sites with LAI	14
Number of Sites with Basal wedge	10
Total metagenomic samples	162
Total metagenomic weight (kg)	81

Appendix 2. Plot locations

Plot Name	Date	Location	latitude	longitude
SASMDD0001	21-Sep-12	Supersite Tower. Calperum Station, 24.5km North West of Renmark	-34.0026583	140.586408
SASMDD0002	23-Sep-12	Calperum Station, 23km North West of Renmark	-34.0116972	140.592692
SASMDD0003	23-Sep-12	Calperum Station. 12.8km north west of Homestead. 24.8km north west of Renmark	-33.9945306	140.585636
	01-May-15			
SASMDD0004	22-Jan-13	Calperum Station. 5.3km north east of homestead. 20km north of Renmark	-33.9967639	140.734628
	23-Apr-15			
SASMDD0005	24-Sep-12	Calperum Station, 20.5 km North of Renmark	-33.9743111	140.725781
	29-Apr-15			
SASMDD0006	25-Sep-12	Calperum Station. 22km North Of Renmark	-33.9727417	140.727261
	29-Apr-15			
SASMDD0008	08-Mar-12	Calperum Station. 4.5km east of homestead. 14.5 km north north east of Renmark	-34.0441528	140.76035
	26-Apr-15			
SASMDD0009	06-Mar-12	Calperum Station, 2.6 km south west of Homestead. 13.6km north north west of Renmark	-34.0596972	140.695778
	30-Apr-15			
SASMDD0010	07-Mar-12	Calperum Station, 13.3 km west north west of homestead. 19km north west of Renmark	-34.003975	140.575022
SASMDD0011	16-Dec-12	Calperum Station. 2.4km north of homestead. 17.5km north north west of Renmark	-34.0188944	140.709528
	24-Apr-15			
SASMDD0012	19-Nov-13	Calperum Station. 20kms northwest of Renmark.	-34.0591389	140.754347
SASMDD0013	18-Nov-13	Calperum Station about 20kns northwest of Renmark. About 1km from River Murray.	-34.0567028	140.734869
SASMDD0014	20-Nov-13	Calperum Station 1km west of office and about 20kms northwest of Renmark.	-34.0377583	140.705414
SASMDD0016	25-Apr-15	Calperum Station. 9.3km north of homestead.24km north of Renmark	-33.9569028	140.718544
SASMDD0017	24-Apr-15	Calperum Station, 9.5km north of Homestead. 24.5km north north west of Renmark	-33.9555917	140.717997
SASMDD0018	02-May-15	Calperum Station,13.2 km west north west of homestead. 24.5km north west of Renmark	-34.0030722	140.576117
SASRIV0001	28-Apr-15	Calperum Station. 4km east of homestead. 15km north of Renmark.	-34.0378278	140.755972
SASRIV0002	28-Apr-15	Calperum Station. 6.3 km east of Homestead. 15km north north east of Renmark	-34.0428278	140.780633

Appendix 3. Point intercept data

Plot name	Visit Date	Herbarium ID	Common name	Approx. % cover
SASMDD0001	21-Sep-12	Triodia scariosa	Porcupine Grass	22.08
SASMDD0001	21-Sep-12	Eucalyptus cyanophylla x Eucalyptus dumosa intergrade		18.61
SASMDD0001	21-Sep-12	Eucalyptus socialis subsp. socialis	Red mallee	18.51
SASMDD0001	21-Sep-12	Austrostipa sp.	Spear-grasses	1.29
SASMDD0002	23-Sep-12	Eucalyptus oleosa	Red Mallee	15.89
SASMDD0002	23-Sep-12	Eucalyptus socialis subsp. socialis	Red mallee	10.82
SASMDD0002	23-Sep-12	Eucalyptus dumosa	Bunurdu	9.83
SASMDD0002	23-Sep-12	Maireana pentatropis	Erect Mallee Bluebush	3.08
SASMDD0002	23-Sep-12	Austrostipa sp.	Spear-grasses	2.28
SASMDD0002	23-Sep-12	Myoporum platycarpum	Bastard Sandalwood	1.39
SASMDD0002	23-Sep-12	Maireana radiata	Grey Bluebush	1.29
SASMDD0002	23-Sep-12	Zygophyllum aurantiacum subsp. Auraniticum		1.19
SASMDD0002	23-Sep-12	Senna artemisioides subsp. x petiolaris	Woody Cassia	1.19
SASMDD0003	1-May-15	Austrostipa scabra subsp. scabra		16.04
SASMDD0003	1-May-15	Eucalyptus oleosa subsp. oleosa	Red morrell	3.27
SASMDD0003	1-May-15	Eucalyptus gracilis	Red Mallee	2.87
SASMDD0003	1-May-15	Eucalyptus cyanophylla	Blue leaved Mallee	1.88
SASMDD0003	1-May-15	Sclerolaena diacantha	Grey Copper Burr	1.88
SASMDD0003	1-May-15	Eucalyptus cyanophylla	Blue leaved Mallee	1.68
SASMDD0003	1-May-15	Eucalyptus oleosa subsp. oleosa	Red morrell	1.19
SASMDD0004	22-Jan-13	Maireana sp.		9.41
SASMDD0004	22-Jan-13	Carrichtera annua	Ward's Weed	9.31
SASMDD0004	22-Jan-13	Maireana pyramidata	Black Bluebush	5.84
SASMDD0004	22-Jan-13	Limonium lobatum	Winged Sea Lavender	2.67
SASMDD0004	23-Apr-15	Maireana turbinata		7.82
SASMDD0004	23-Apr-15	Maireana pyramidata	Black Bluebush	4.65
SASMDD0004	23-Apr-15	Austrostipa nitida	Balcarra Grass	2.08
SASMDD0004	23-Apr-15	Sclerolaena obliquicuspis	Limestone Bindii	2.08
SASMDD0004	23-Apr-15	Limonium lobatum	Winged Sea Lavender	1.19
SASMDD0005	24-Sep-12	Salvia verbenaca var. vernalis	Vervain	16.53
SASMDD0005	24-Sep-12	Sclerolaena diacantha	Grey Copper Burr	10.79
SASMDD0005	24-Sep-12	Austrostipa nitida	Balcarra Grass	10.40
SASMDD0005	24-Sep-12	Maireana pyramidata	Black Bluebush	3.47
SASMDD0005	24-Sep-12	Maireana pentatropis	Erect Mallee Bluebush	2.18
SASMDD0005	29-Apr-15	Medicago minima	Burr Medic	9.21
SASMDD0005	29-Apr-15	Maireana pyramidata	Black Bluebush	3.96
SASMDD0005	29-Apr-15	Dodonaea viscosa subsp. angustissima	Narrow-leaf Hop-bush	1.58
SASMDD0005	29-Apr-15	Salvia verbenaca	Vervain	1.19
SASMDD0006	25-Sep-12	Zygophyllum aurantiacum subsp. aurantiacum		8.91
SASMDD0006	25-Sep-12	Eucalyptus sp.	Eucalyptus	6.16

Plot name	Visit Date	Herbarium ID	Common name	Approx. % cover
SASMDD0006	25-Sep-12	Maireana pentatropis	Erect Mallee Bluebush	4.51
SASMDD0006	25-Sep-12	Enchylaena tomentosa var. tomentosa X Maireana georgei hybrid		3.52
SASMDD0006	25-Sep-12	Sclerolaena diacantha	Grey Copper Burr	3.41
SASMDD0006	25-Sep-12	Eucalyptus oleosa subsp. oleosa	Red morrell	3.41
SASMDD0006	25-Sep-12	Maireana georgei	Golden Bluebush	3.41
SASMDD0006	25-Sep-12	Myoporum platycarpum subsp. platycarpum		3.30
SASMDD0006	25-Sep-12	Eriochiton sclerolaenoides	Woolly Bindii	1.87
SASMDD0006	25-Sep-12	Austrostipa nitida	Balcarra Grass	1.87
SASMDD0006	25-Sep-12	Eucalyptus dumosa	Bunurdu	1.10
SASMDD0006	29-Apr-15	Eucalyptus socialis subsp. socialis	Red mallee	5.05
SASMDD0006	29-Apr-15	Eucalyptus oleosa subsp. oleosa	Red morrell	4.26
SASMDD0006	29-Apr-15	Dodonaea viscosa subsp. angustissima	Narrow-leaf Hop-bush	3.66
SASMDD0006	29-Apr-15	Zygophyllum aurantiacum subsp. aurantiacum		3.27
SASMDD0006	29-Apr-15	Eucalyptus dumosa	Bunurdu	2.67
SASMDD0006	29-Apr-15	Sclerolaena obliquicuspis	Limestone Bindii	1.09
SASMDD0008	26-Apr-15	Eucalyptus largiflorens	Black Box	34.75
SASMDD0008	26-Apr-15	Eucalyptus camaldulensis subsp. camaldulensis	River Red Gum	19.21
SASMDD0008	26-Apr-15	Enchylaena tomentosa var. tomentosa	Ruby Saltbush	4.26
SASMDD0008	26-Apr-15	Chenopodium nitrariaceum	Branching Goosefoot	1.09
SASMDD0009	30-Apr-15	Dodonaea viscosa subsp. angustissima	Narrow-leaf Hop-bush	10.79
SASMDD0009	30-Apr-15	Maireana pyramidata	Black Bluebush	5.05
SASMDD0009	30-Apr-15	Medicago minima	Burr Medic	4.46
SASMDD0009	30-Apr-15	Callitris glaucophylla	White Cypress	2.18
SASMDD0009	30-Apr-15	Olearia pimeleoides	Burrabunga	1.78
SASMDD0011	16/12/2012	Maireana pyramidata	Black Bluebush	15.74
SASMDD0011	16/12/2012	Annual Grass (unidentified)		4.65
SASMDD0011	16/12/2012	Annual forb(unidentified)		2.77
SASMDD0011	16/12/2012	Sclerolaena patentiscuspis		1.98
SASMDD0011	24-Apr-15	Maireana pyramidata	Black Bluebush	14.55
SASMDD0011	24-Apr-15	Carrichtera annua	Wards Weed	10.99
SASMDD0011	24-Apr-15	Medicago minima	Burr Medic	2.28
SASMDD0011	24-Apr-15	Sida intricata		1.58
SASMDD0012	19-Nov-13	Eucalyptus largiflorens	Black Box	42.38
SASMDD0012	19-Nov-13	Enchylaena tomentosa var. tomentosa	Ruby Saltbush	4.55
SASMDD0012	19-Nov-13	Mesembryanthemum nodiflorum	Slender Ice-plant	1.58
SASMDD0013	18-Nov-13	Disphyma crassifolium subsp. clavellatum	Rounded Noon-flower	10.59
SASMDD0013	18-Nov-13	Eucalyptus largiflorens	Black Box	10.00
SASMDD0013	18-Nov-13	Mesembryanthemum nodiflorum	Slender Ice-plant	6.44
SASMDD0013	18-Nov-13	Sclerolaena tricuspidis	Giant Red Burr	2.57
SASMDD0013	18-Nov-13	Enchylaena tomentosa var. tomentosa	Ruby Saltbush	2.48
SASMDD0014	20-Nov-13	Dodonaea viscosa subsp. angustissima	Narrow-leaf Hop-bush	10.40
SASMDD0014	20-Nov-13	Maireana pyramidata	Black Bluebush	4.36

Plot name	Visit Date	Herbarium ID	Common name	Approx. % cover
SASMDD0014	20-Nov-13	Rhagodia spinescens	Berry Saltbush	2.97
SASMDD0014	20-Nov-13	Eucalyptus largiflorens X Eucalyptus .gracilis		2.18
SASMDD0016	25-Apr-15	Eucalyptus oleosa subsp. oleosa	Red morrell	24.95
SASMDD0016	25-Apr-15	Eucalyptus gracilis	Red Mallee	7.52
SASMDD0016	25-Apr-15	Zygophyllum aurantiacum subsp. aurantiacum		5.05
SASMDD0016	25-Apr-15	Senna artemisioides subsp. x coriacea		2.18
SASMDD0017	24-Apr-15	Triodia scariosa	Porcupine Grass	19.70
SASMDD0017	24-Apr-15	Eucalyptus dumosa	Bunurduk	10.00
SASMDD0017	24-Apr-15	Eucalyptus socialis subsp. socialis	Red mallee	9.01
SASMDD0017	24-Apr-15	Eucalyptus incrassata	Angular Yellow Mallee	7.52
SASMDD0017	24-Apr-15	Eucalyptus oleosa subsp. oleosa	Red morrell	1.39
SASMDD0018	2-May-15	Eucalyptus socialis subsp. socialis	Red mallee	4.75
SASMDD0018	2-May-15	Eucalyptus cyanopylla		4.16
SASMDD0018	2-May-15	Triodia scariosa	Porcupine Grass	2.77
SASMDD0018	2-May-15	Austrostipa scabra subsp. scabra		2.67
SASMDD0018	2-May-15	Eucalyptus gracilis	Red Mallee	2.38
SASMDD0018	2-May-15	Myoporum platycarpum	Bastard Sandalwood	2.28
SASMDD0018	2-May-15	Eucalyptus oleosa subsp. oleosa	Red morrell	1.78
SASMDD0018	2-May-15	Eremophila glabra subsp. murrayana		1.29
SASRIV0001	28-Apr-15	Atriplex lindleyi subsp. lindleyi	Flat-top Saltbush	9.70
SASRIV0001	28-Apr-15	Sclerolaena tricuspidis	Giant Red Burr	2.28
SASRIV0001	28-Apr-15	Atriplex leptocarpa	Creeping Saltbush	2.18
SASRIV0002	28-Apr-15	Tecticornia triandra	Desert Glasswort	6.44
SASRIV0002	28-Apr-15	Disphyma crassifolium ssp. clavellatum		4.85
SASRIV0002	28-Apr-15	Atriplex lindleyi subsp. inflata		1.39

Appendix 4. Substrate and growth form

Plot Name	Visit Date	Substrate	Approx. % Cover
SASMDD0001	21-Sep-12	Leaf Litter	54.65
SASMDD0001	21-Sep-12	Bare Ground	20.00
SASMDD0001	21-Sep-12	Cryptogam	18.61
SASMDD0001	21-Sep-12	Coarse Woody Debris	0.79
SASMDD0002	23-Sep-12	Leaf Litter	60.38

Plot Name	Visit Date	Substrate	Approx. % Cover
SASMDD0002	23-Sep-12	Bare Ground	23.24
SASMDD0002	23-Sep-12	Cryptogam	11.82
SASMDD0002	23-Sep-12	Coarse Woody Debris	0.89

Plot Name	Visit Date	Substrate	Approx. % Cover
SASMDD0003	01-May-15	Bare Ground	49.01
SASMDD0003	01-May-15	Leaf Litter	37.62
SASMDD0003	01-May-15	Cryptogam	6.14
SASMDD0003	01-May-15	Coarse Woody Debris	0.50
SASMDD0003	01-May-15	Unknown	0.10

Plot Name	Visit Date	Substrate	Approx. % Cover
SASMDD0004	22-Jan-13	Leaf Litter	51.58
SASMDD0004	22-Jan-13	Cryptogam	27.52
SASMDD0004	22-Jan-13	Bare Ground	19.31
SASMDD0004	22-Jan-13	Unkwn	0.79
SASMDD0004	22-Jan-13	Coarse Woody Debris	0.50
SASMDD0004	23-Apr-15	Bare Ground	35.15
SASMDD0004	23-Apr-15	Cryptogam	29.11
SASMDD0004	23-Apr-15	Leaf Litter	26.04
SASMDD0004	23-Apr-15	Unknown	0.10

Plot Name	Visit Date	Growth form	Approx. % of Growth Forms
SASMDD0001	21-Sep-12	Tree Mallee	52.42
SASMDD0001	21-Sep-12	Hummock grass	38.58
SASMDD0001	21-Sep-12	Shrub	4.15
SASMDD0001	21-Sep-12	Tussock grass	2.42
SASMDD0001	21-Sep-12	Chenopod	1.73
SASMDD0001	21-Sep-12	Forb	0.69
Plot Name	Visit Date	Growth form	Approx. % of Growth Forms
SASMDD0002	23-Sep-12	Tree Mallee	71.10
SASMDD0002	23-Sep-12	Chenopod	12.87
SASMDD0002	23-Sep-12	Shrub	9.28
SASMDD0002	23-Sep-12	Tussock grass	4.85
SASMDD0002	23-Sep-12	Forb	1.90
Plot Name	Visit Date	Growth form	Approx. % of Growth Forms
SASMDD0003	01-May-15	Tussock grass	67.34
SASMDD0003	01-May-15	Shrub Mallee	17.34
SASMDD0003	01-May-15	Chenopod	13.31
SASMDD0003	01-May-15	Shrub	1.21
SASMDD0003	01-May-15	Tree/Palm	0.40
SASMDD0003	01-May-15	Forb	0.40
Plot Name	Visit Date	Growth form	Approx. % of Growth Forms
SASMDD0004	22-Jan-13	Chenopod	77.37
SASMDD0004	22-Jan-13	Forb	11.58
SASMDD0004	22-Jan-13	Tussock grass	11.05
SASMDD0004	23-Apr-15	Chenopod	64.25
SASMDD0004	23-Apr-15	Forb	35.75

Plot Name	Visit Date	Substrate	Approx. % Cover
SASMDD0005	24-Sep-12	Leaf Litter	80.79
SASMDD0005	24-Sep-12	Bare Ground	6.14
SASMDD0005	24-Sep-12	Cryptogam	3.66
SASMDD0005	24-Sep-12	Coarse Woody Debris	0.30
SASMDD0005	29-Apr-15	Leaf Litter	57.43
SASMDD0005	29-Apr-15	Bare Ground	33.47
SASMDD0005	29-Apr-15	Cryptogam	6.14
SASMDD0005	29-Apr-15	Coarse Woody Debris	0.20
SASMDD0005	29-Apr-15	Gravel	0.10
Plot Name	Visit Date	Substrate	Approx. % Cover
SASMDD0006	25-Sep-12	Leaf Litter	46.53
SASMDD0006	25-Sep-12	Unknown	22.00
SASMDD0006	25-Sep-12	Bare Ground	16.83
SASMDD0006	25-Sep-12	Cryptogam	8.80
SASMDD0006	25-Sep-12	Coarse Woody Debris	1.21
SASMDD0006	29-Apr-15	Leaf Litter	56.04
SASMDD0006	29-Apr-15	Bare Ground	32.57
SASMDD0006	29-Apr-15	Cryptogam	7.72
SASMDD0006	29-Apr-15	Coarse Woody Debris	0.69
SASMDD0006	29-Apr-15	Unknown	0.10

Plot Name	Visit Date	Substrate	Approx. % Cover
SASMDD0008	26-Apr-15	Leaf Litter	64.65
SASMDD0008	26-Apr-15	Bare Ground	12.87
SASMDD0008	26-Apr-15	Cryptogam	9.21
SASMDD0008	26-Apr-15	Coarse Woody Debris	3.37
Plot Name	Visit Date	Substrate	Approx. % Cover
SASMDD0009	30-Apr-15	Leaf Litter	49.41
SASMDD0009	30-Apr-15	Bare Ground	38.51
SASMDD0009	30-Apr-15	Cryptogam	8.71
SASMDD0009	30-Apr-15	Coarse Woody Debris	1.78
SASMDD0009	30-Apr-15	Unknown	0.10

Plot Name	Visit Date	Growth form	Approx. % of Growth Forms
SASMDD0005	24-Sep-12	Forb	47.37
SASMDD0005	24-Sep-12	Chenopod	25.00
SASMDD0005	24-Sep-12	Tussock grass	24.47
SASMDD0005	24-Sep-12	Shrub	3.16
SASMDD0005	29-Apr-15	Forb	58.79
SASMDD0005	29-Apr-15	Chenopod	26.37
SASMDD0005	29-Apr-15	Shrub	13.19
SASMDD0005	29-Apr-15	Hummock grass	1.10
SASMDD0005	29-Apr-15	Tussock grass	0.55
Plot Name	Visit Date	Growth form	Approx. % of Growth Forms
SASMDD0006	25-Sep-12	Chenopod	31.64
SASMDD0006	25-Sep-12	Tree Mallee	25.42
SASMDD0006	25-Sep-12	Forb	23.16
SASMDD0006	25-Sep-12	Shrub	15.54
SASMDD0006	25-Sep-12	Tussock grass	3.11
SASMDD0006	25-Sep-12	Hummock grass	1.13
SASMDD0006	29-Apr-15	Tree Mallee	40.33
SASMDD0006	29-Apr-15	Shrub	27.57
SASMDD0006	29-Apr-15	Chenopod	16.46
SASMDD0006	29-Apr-15	Forb	12.76
SASMDD0006	29-Apr-15	Hummock grass	1.65
SASMDD0006	29-Apr-15	Tree/Palm	0.82
SASMDD0006	29-Apr-15	Vine	0.41
Plot Name	Visit Date	Growth form	Approx. % of Growth Forms
SASMDD0008	26-Apr-15	Tree/Palm	80.74
SASMDD0008	26-Apr-15	Chenopod	17.17
SASMDD0008	26-Apr-15	Forb	1.86
SASMDD0008	26-Apr-15	Shrub	0.23
Plot Name	Visit Date	Growth form	Approx. % of Growth Forms
SASMDD0009	30-Apr-15	Shrub	45.29
SASMDD0009	30-Apr-15	Chenopod	22.83
SASMDD0009	30-Apr-15	Forb	21.74
SASMDD0009	30-Apr-15	Tree/Palm	7.97
SASMDD0009	30-Apr-15	Tussock grass	2.17

Plot Name	Visit Date	Substrate	Approx. % Cover
SASMDD0011	16-Dec-12	Leaf Litter	56.73
SASMDD0011	16-Dec-12	Cryptogam	27.43
SASMDD0011	16-Dec-12	Bare Ground	15.45
SASMDD0011	16-Dec-12	Coarse Woody Debris	0.40
SASMDD0011	24-Apr-15	Leaf Litter	48.02
SASMDD0011	24-Apr-15	Cryptogam	25.54
SASMDD0011	24-Apr-15	Bare Ground	20.20
SASMDD0011	24-Apr-15	Unknown	0.10
Plot Name	Visit Date	Substrate	Approx. % Cover
SASMDD0012	19-Nov-13	Leaf Litter	48.91
SASMDD0012	19-Nov-13	Cryptogam	23.37
SASMDD0012	19-Nov-13	Bare Ground	12.08
SASMDD0012	19-Nov-13	Coarse Woody Debris	2.18
Plot Name	Visit Date	Substrate	Approx. % Cover
SASMDD0013	18-Nov-13	Leaf Litter	44.46
SASMDD0013	18-Nov-13	Bare Ground	25.94
SASMDD0013	18-Nov-13	Cryptogam	21.88
SASMDD0013	18-Nov-13	Coarse Woody Debris	0.10
Plot Name	Visit Date	Substrate	Approx. % Cover
SASMDD0014	20-Nov-13	Bare Ground	42.67
SASMDD0014	20-Nov-13	Leaf Litter	29.50
SASMDD0014	20-Nov-13	Cryptogam	22.97
SASMDD0014	20-Nov-13	Coarse Woody Debris	1.09
SASMDD0014	20-Nov-13	Gravel	0.79

Plot Name	Visit Date	Growth form	Approx. % of Growth Forms
SASMDD0011	16-Dec-12	Chenopod	68.30
SASMDD0011	16-Dec-12	Forb	21.13
SASMDD0011	16-Dec-12	Tussock grass	10.57
SASMDD0011	24-Apr-15	Chenopod	54.68
SASMDD0011	24-Apr-15	Forb	45.32

Plot Name	Visit Date	Growth form	Approx. % of Growth Forms
SASMDD0012	19-Nov-13	Tree/Palm	77.57
SASMDD0012	19-Nov-13	Chenopod	13.72
SASMDD0012	19-Nov-13	Forb	7.12
SASMDD0012	19-Nov-13	Shrub	1.58
Plot Name	Visit Date	Growth form	Approx. % of Growth Forms
SASMDD0013	18-Nov-13	Forb	63.52
SASMDD0013	18-Nov-13	Tree/Palm	21.31
SASMDD0013	18-Nov-13	Chenopod	13.52
SASMDD0013	18-Nov-13	Shrub	1.64
Plot Name	Visit Date	Growth form	Approx. % of Growth Forms
SASMDD0014	20-Nov-13	Shrub	47.62
SASMDD0014	20-Nov-13	Chenopod	37.62
SASMDD0014	20-Nov-13	Tree/Palm	10.48
SASMDD0014	20-Nov-13	Forb	4.29

Plot Name	Visit Date	Substrate	Approx. % Cover
SASMDD0016	25-Apr-15	Leaf Litter	56.24
SASMDD0016	25-Apr-15	Bare Ground	19.80
SASMDD0016	25-Apr-15	Cryptogam	14.65
SASMDD0016	25-Apr-15	Coarse Woody Debris	0.69
SASMDD0016	25-Apr-15	Unknown	0.20
SASMDD0016	25-Apr-15	Gravel	0.10
Plot Name	Visit Date	Substrate	Approx. % Cover
SASMDD0017	24-Apr-15	Leaf Litter	57.72
SASMDD0017	24-Apr-15	Bare Ground	31.58
SASMDD0017	24-Apr-15	Cryptogam	7.23
SASMDD0017	24-Apr-15	Coarse Woody Debris	0.30
SASMDD0017	24-Apr-15	Unknown	0.20
Plot Name	Visit Date	Substrate	Approx. % Cover
SASMDD0018	02-May-15	Bare Ground	47.72
SASMDD0018	02-May-15	Leaf Litter	39.31
SASMDD0018	02-May-15	Cryptogam	7.33
SASMDD0018	02-May-15	Coarse Woody Debris	0.20
SASMDD0018	02-May-15	Unknown	0.10

Plot Name	Visit Date	Substrate	Approx. % Cover
SASRIV0001	28-Apr-15	Leaf Litter	50.89
SASRIV0001	28-Apr-15	Bare Ground	38.42
SASRIV0001	28-Apr-15	Cryptogam	7.82

Plot Name	Visit Date	Substrate	Approx. % Cover
SASRIV0002	28-Apr-15	Leaf Litter	42.57
SASRIV0002	28-Apr-15	Bare Ground	36.63
SASRIV0002	28-Apr-15	Cryptogam	19.60

Plot Name	Visit Date	Growth form	Approx. % of Growth Forms
SASMDD0016	25-Apr-15	Tree Mallee	74.49
SASMDD0016	25-Apr-15	Chenopod	7.92
SASMDD0016	25-Apr-15	Forb	7.33
SASMDD0016	25-Apr-15	Shrub	7.33
SASMDD0016	25-Apr-15	Shrub Mallee	2.64
SASMDD0016	25-Apr-15	Tussock grass	0.29
Plot Name	Visit Date	Growth form	Approx. % of Growth Forms
SASMDD0017	24-Apr-15	Tree Mallee	53.23
SASMDD0017	24-Apr-15	Hummock grass	42.67
SASMDD0017	24-Apr-15	Shrub	2.80
SASMDD0017	24-Apr-15	Shrub Mallee	1.29

Plot Name	Visit Date	Growth form	Approx. % of Growth Forms
SASMDD0018	02-May-15	Shrub Mallee	41.20
SASMDD0018	02-May-15	Shrub	23.15
SASMDD0018	02-May-15	Hummock grass	12.96
SASMDD0018	02-May-15	Tussock grass	12.96
SASMDD0018	02-May-15	Tree Mallee	5.09
SASMDD0018	02-May-15	Forb	2.78
SASMDD0018	02-May-15	Chenopod	1.39
SASMDD0018	02-May-15	Tree/Palm	0.46
Plot Name	Visit Date	Growth form	Approx. % of Growth Forms
SASRIV0001	28-Apr-15	Chenopod	83.70
SASRIV0001	28-Apr-15	Forb	16.30

Plot Name	Visit Date	Growth form	Approx. % of Growth Forms
SASRIV0002	28-Apr-15	Chenopod	59.15
SASRIV0002	28-Apr-15	Forb	40.85

Appendix 5. Structural Summary

Plot name	Date	Structural description
SASMDD0001	21-Sep-12	<i>Eucalyptus cyanophylla</i> - <i>Eucalyptus dumosa</i> intergrade / <i>Eucalyptus socialis</i> subsp. <i>socialis</i> mid open mallee forest . Sparse midstratum of <i>Dodonaea viscosa</i> subsp. <i>angustissima</i> and ground stratum dominated by <i>Triodia scariosa</i> with scattered <i>Austrostipa</i> sp.
SASMDD0002	23-Sep-12	<i>Eucalyptus oleosa</i> / <i>Eucalyptus socialis</i> subsp. <i>socialis</i> / <i>Eucalyptus dumosa</i> mixed mid open mallee forest. Sparse mid layer of isolated shrubs and a sparse ground layer dominated by <i>Maireana pentatropis</i> and <i>Austrostipa</i> sp.
SASMDD0003	23-Sep-12	<i>Eucalyptus gracilis</i> / <i>Eucalyptus oleosa</i> subsp. <i>oleosa</i> low mallee woodland with <i>Eucalyptus socialis</i> . Mid-stratum is <i>Senna artemisioides</i> subsp. <i>filifolia</i> with <i>Olearia muelleri</i> and a ground stratum dominated by <i>Triodia scariosa</i> and <i>Maireana</i> spp.
SASMDD0003	01-May-15	<i>Eucalyptus gracilis</i> / <i>Eucalyptus socialis</i> subsp. <i>socialis</i> / <i>Eucalyptus cyanophylla</i> / <i>Eucalyptus oleosa</i> subsp. <i>oleosa</i> mixed low mallee woodland. Scattered <i>Maireana</i> sp. (possibly <i>M. pentatropis</i>) in a lower mid stratum. Ground layer dominated by <i>Austrostipa scabra</i> subsp. <i>scabra</i> with <i>Chenopodium desertorum</i> subsp. <i>desertorum</i> and <i>Sclerolaena diacantha</i>
SASMDD0004	22-Jan-13	<i>Maireana turbinata</i> / <i>Maireana pyramidata</i> low open chenopod shrubland with scattered <i>Austrostipa nitida</i> and <i>Sclerolaena obliquicuspis</i> . No mid or upper stratum
SASMDD0004	23-Apr-15	<i>Enchylaena tomentosa</i> / <i>Maireana georgei</i> hybrid and <i>Maireana Pyramidata</i> low open chenopod shrubland. Ground layer dominated by <i>Carrichtera annua</i> and <i>Medicago minima</i> .
SASMDD0005	24-Sep-12	<i>Maireana pyramidata</i> / <i>Dodonaea viscosa</i> subsp. <i>angustissima</i> mid open with emergent <i>Callitris glaucophylla</i> . Ground stratum is <i>Austrostipa nitida</i> , <i>Sclerolaena diacantha</i> and <i>Salvia verbenaca</i> .
SASMDD0005	29-Apr-15	<i>Maireana pyramidata</i> mixed low open chenopod shrubland to <i>Dodonaea viscosa</i> / <i>Eremophila sturtii</i> low open shrubland with isolated emergent <i>Callitris</i> . Ground stratum dominated by recently germinated <i>Medicago minima</i> . Dead timber on site likely also <i>Callitris</i> .
SASMDD0006	25-Sep-12	<i>Eucalyptus oleosa</i> subsp. <i>oleosa</i> mid open mallee woodland with <i>Myoporum platycarpum</i> subsp. <i>platycarpum</i> and scattered <i>Eucalyptus socialis</i> subsp. <i>socialis</i> and <i>Eucalyptus dumosa</i> . A sparse mid-stratum of scattered <i>Dodonaea viscosa</i> subsp. <i>angustissima</i> . Ground stratum dominated by <i>Zygophyllum aurantiacum</i> subsp. <i>aurantiacum</i> with isolated <i>Sclerolaena diacantha</i> , <i>Eriochiton sclerolaenoides</i> and <i>Austrostipa nitida</i>
SASMDD0006	29-Apr-15	<i>Eucalyptus socialis</i> subsp. <i>socialis</i> (5-7m) mixed mid mallee woodland with <i>Eucalyptus dumosa</i> and <i>Eucalyptus oleosa</i> subsp. <i>oleosa</i> . Mid stratum dominated by <i>Dodonaea viscosa</i> and some <i>Eremophila sturtii</i> . Lower mid stratum of <i>Maireana pyramidata</i> . Ground stratum dominated by <i>Zygophyllum aurantiacum</i> subsp. <i>aurantiacum</i> with isolated <i>Sclerolaena obliquicuspis</i>
SASMDD0008	08-Mar-12	<i>Eucalyptus largiflorens</i> / <i>Eucalyptus camaldulensis</i> mid open forest.
SASMDD0008	26-Apr-15	<i>Eucalyptus largiflorens</i> (8-10m) / <i>Eucalyptus camaldulensis</i> (12-15m) mid open forest. <i>Eucalyptus camaldulensis</i> confined to creek line and the edge closest to the river channel. Sparse mid-stratum – scattered <i>Duma florulenta</i> and <i>Chenopodium nitrariaceum</i> . Ground stratum dominated by <i>Enchylaena tomentosa</i> var. <i>tomentosa</i>
SASMDD0009	06-Mar-12	<i>Callitris glaucophylla</i> mid sparse woodland to <i>Dodonaea viscosa</i> subsp. <i>angustissima</i> mid shrubland. <i>Maireana pyramidata</i> in lower mid stratum.
SASMDD0009	30-Apr-15	<i>Callitris glaucophylla</i> mid sparse woodland to <i>Dodonaea viscosa</i> subsp. <i>angustissima</i> mid shrubland. <i>Maireana pyramidata</i> in lower mid stratum. Scattered dry tussock grasses in the ground stratum with <i>Medicago minima</i> also germinating after recent rain.
SASMDD0011	16-Dec-12	<i>Maireana pyramidata</i> low open chenopod shrubland with scattered annual grasses and forbs.
SASMDD0011	24-Apr-15	<i>Maireana pyramidata</i> low open chenopod shrubland (50cm) with 1 or 2 isolated <i>Maireana sedifolia</i> . Recently germinated <i>Carrichtera annua</i> and <i>Medicago minima</i> in the ground layer.
SASMDD0012	19-Nov-13	<i>Eucalyptus largiflorens</i> low woodland with a sparse understratum dominated by <i>Enchylaena tomentosa</i> var. <i>tomentosa</i> .
SASMDD0013	18-Nov-13	<i>Eucalyptus largiflorens</i> woodland low open woodland with a ground stratum dominated by <i>Disphyma crassifolium</i> subsp. <i>clavellatum</i> and <i>Mesembryanthemum nodiflorum</i> .

SASMDD0014	20-Nov-13	<i>Dodonaea viscosa</i> mid sparse shrubland with isolated emergent <i>Callitris gracilis</i> . A lower mid stratum of <i>Maireana pyramidata</i> , <i>Rhagodia spinescens</i> and scattered <i>Olearia pimeleoides</i> .
SASMDD0016	25-Apr-15	<i>Eucalyptus oleosa</i> mid mallee woodland with <i>Eucalyptus gracilis</i> . Mid stratum of <i>Senna artemisioides</i> subsp. <i>coriacea</i> and a ground stratum dominated by <i>Zygophyllum aurantiacum</i> subsp. <i>aurantiacum</i> and mixed scattered chenopods mainly <i>Atriplex stipitata</i> and M
SASMDD0017	24-Apr-15	<i>Eucalyptus dumosa</i> / <i>E. socialis</i> / <i>E. incrassata</i> mixed mid mallee woodland. Mid stratum sparse but includes juvenile <i>Eucalypt</i> species and some <i>Beyeria</i> sp. Ground stratum dominated by <i>Triodia scariosa</i> . <i>Eucalyptus incrassata</i> more confined to the crest of the
SASMDD0018	02-May-15	<i>Eucalyptus gracilis</i> / <i>Eucalyptus socialis</i> subsp. <i>socialis</i> / <i>Eucalyptus cyanophylla</i> / <i>Eucalyptus oleosa</i> subsp. <i>oleosa</i> mixed low mallee woodland with isolated emergent <i>Codonocarpus cotinifolius</i> . Diverse mid stratum which include regenerating <i>Eucalyptus</i> spp.
SASRIV0001	28-Apr-15	<i>Atriplex lindleyi</i> / <i>Atriplex semibaccata</i> low open chenopod with <i>Sclerolaena</i> sp. Some forbs regenerating after recent rain but to juvenile to ID properly.
SASRIV0002	28-Apr-15	<i>Tecticornia triandra</i> low open samphire shrubland with <i>Disphyma crassifolium</i> subsp. <i>clavellatum</i> and <i>Atriplex lindleyi</i> subsp. <i>inflata</i> .

Appendix 6. Soil Classification

Plot name	Date	Upper depth	Lower depth	Horizon	Texture	Colour when moist	pH	EC	Effervescence
SASMDD0001	21-Sep-12	0	0.1	NC	Not Collected		7.5	0.01	Not Collected
SASMDD0001	21-Sep-12	0.1	0.2	NC	Not Collected		8.2	0.02	Not Collected
SASMDD0001	21-Sep-12	0.3	0.4	NC	Not Collected		9	0.06	Not Collected
SASMDD0001	21-Sep-12	0.5	0.6	NC	Not Collected		9.1	0.07	Not Collected
SASMDD0001	21-Sep-12	0.7	0.8	NC	Not Collected		9.5	0.25	Not Collected
SASMDD0001	21-Sep-12	0.9	1	NC	Not Collected		9.7	0.57	Not Collected
SASMDD0002	23-Sep-12	0.1	0.2	NC	Not Collected				Not Collected
SASMDD0002	23-Sep-12	0.3	0.4	NC	Not Collected				Not Collected
SASMDD0002	23-Sep-12	0.5	0.6	NC	Not Collected				Not Collected
SASMDD0002	23-Sep-12	0.6	0.7	NC	Not Collected				Not Collected
SASMDD0002	23-Sep-12	0.7	0.8	NC	Not Collected				Not Collected
SASMDD0002	23-Sep-12	0.8	0.9	NC	Not Collected				Not Collected
SASMDD0002	23-Sep-12	0.9	1	NC	Not Collected				Not Collected
SASMDD0003	23-Sep-12	0	0.1	A1	Sand				Not Collected
SASMDD0003	23-Sep-12	0.1	1	A3	Sand				Not Collected
SASMDD0003	01-May-15	0	0.1	NC	Not Collected	NC	8.6	0.22	Highly calcareous
SASMDD0003	01-May-15	0.1	0.2	NC	Not Collected	NC	9.2	0.29	Highly calcareous
SASMDD0003	01-May-15	0.2	0.3	NC	Not Collected	NC	9.7	0.43	Very highly calcareous
SASMDD0003	01-May-15	0.3	0.4	NC	Not Collected	NC	9.9	0.66	Very highly calcareous
SASMDD0003	01-May-15	0.4	0.5	NC	Not Collected	NC	10	0.88	Very highly calcareous
SASMDD0003	01-May-15	0.5	0.6	NC	Not Collected	NC	9.7	1.85	Very highly calcareous
SASMDD0003	01-May-15	0.6	0.7	NC	Not Collected	NC			Not Collected
SASMDD0003	01-May-15	0.7	0.8	NC	Not Collected	NC	9.3	2.97	Very highly calcareous
SASMDD0003	01-May-15	0.8	0.9	NC	Not Collected	NC	9.3	2.82	Very highly calcareous
SASMDD0004	22-Jan-13	0	0.1	NC	Not Collected	NC			Not Collected
SASMDD0004	22-Jan-13	0.1	0.2	NC	Not Collected	NC			Not Collected
SASMDD0004	22-Jan-13	0.2	0.3	NC	Not Collected	NC			Not Collected
SASMDD0004	22-Jan-13	0.3	0.4	NC	Not Collected	NC			Not Collected
SASMDD0004	22-Jan-13	0.4	0.5	NC	Not Collected	NC			Not Collected
SASMDD0004	22-Jan-13	0.5	0.6	NC	Not Collected	NC			Not Collected
SASMDD0004	22-Jan-13	0.6	0.7	NC	Not Collected	NC			Not Collected
SASMDD0004	22-Jan-13	0.7	0.8	NC	Not Collected	NC			Not Collected
SASMDD0004	22-Jan-13	0.8	0.9	NC	Not Collected	NC			Not Collected
SASMDD0004	23-Apr-15	0	0.07	A1	Clayey sand	5YR44	8.1	0.09	Non-calcareous
SASMDD0004	23-Apr-15	0.07	0.3	A2	Sandy loam	5YR46	8.4	0.02	Non-calcareous
SASMDD0004	23-Apr-15	0.3	0.65	B1	Sandy clay loam	5YR54	8.6	1.01	Highly calcareous
SASMDD0004	23-Apr-15	0.65	1	B2	Sandy clay loam	7.5YR64	7.9	2.29	Slightly calcareous
SASMDD0005	24-Sep-12	0	0.1	NC	Not Collected				Not Collected
SASMDD0005	24-Sep-12	0.1	0.2	NC	Not Collected				Not Collected

Plot name	Date	Upper depth	Lower depth	Horizon	Texture	Colour when moist	pH	EC	Effervescence
SASMDD0005	24-Sep-12	0.2	0.3	NC	Not Collected				Not Collected
SASMDD0005	24-Sep-12	0.3	0.4	NC	Not Collected				Not Collected
SASMDD0005	24-Sep-12	0.4	0.5	NC	Not Collected				Not Collected
SASMDD0005	24-Sep-12	0.5	0.6	NC	Not Collected				Not Collected
SASMDD0005	24-Sep-12	0.6	0.7	NC	Not Collected				Not Collected
SASMDD0005	24-Sep-12	0.7	0.8	NC	Not Collected				Not Collected
SASMDD0005	24-Sep-12	0.8	0.9	NC	Not Collected				Not Collected
SASMDD0005	24-Sep-12	0.9	1	NC	Not Collected				Not Collected
SASMDD0005	29-Apr-15	0	0.43	A1	Loamy sand		8.1	0.1	Non-calcareous
SASMDD0005	29-Apr-15	0.43	0.73	A2	Loamy sand		8.6	0.19	Moderately calcareous
SASMDD0005	29-Apr-15	0.73	0.85	B1	Sandy loam		8.8	0.24	Moderately calcareous
SASMDD0005	29-Apr-15	0.85	1	B2	Sandy clay loam		9.2	0.35	Highly calcareous
SASMDD0006	25-Sep-12	0	0.1	NC	Not Collected				Not Collected
SASMDD0006	25-Sep-12	0.1	0.2	NC	Not Collected				Not Collected
SASMDD0006	25-Sep-12	0.2	0.3	NC	Not Collected				Not Collected
SASMDD0006	25-Sep-12	0.3	0.4	NC	Not Collected				Not Collected
SASMDD0006	25-Sep-12	0.4	0.5	NC	Not Collected				Not Collected
SASMDD0006	25-Sep-12	0.5	0.6	NC	Not Collected				Not Collected
SASMDD0006	25-Sep-12	0.6	0.7	NC	Not Collected				Not Collected
SASMDD0006	25-Sep-12	0.7	0.8	NC	Not Collected				Not Collected
SASMDD0006	25-Sep-12	0.8	0.9	NC	Not Collected				Not Collected
SASMDD0006	25-Sep-12	0.9	1	NC	Not Collected				Not Collected
SASMDD0006	29-Apr-15	0	0.07	A1	Loamy sand	5YR4/4	8.5	0.13	Moderately calcareous
SASMDD0006	29-Apr-15	0.07	0.33	A2	Clayey sand	5YR5/4	9	0.17	Very highly calcareous
SASMDD0006	29-Apr-15	0.33	0.78	B1	Sandy clay loam	5YR5/6	9.4	0.25	Very highly calcareous
SASMDD0006	29-Apr-15	0.78	1	B2	Sandy clay loam	5YR6/6	9.6	2.25	Very highly calcareous
SASMDD0008	08-Mar-12	0	0.05	A1	Clay loam	10YR31	6.2		Non-calcareous
SASMDD0008	08-Mar-12	0.05	0.28	B1	Light medium clay	10YR42	6.9		Non-calcareous
SASMDD0008	08-Mar-12	0.28	0.5	B21	Medium clay	10YR41	6.7		Non-calcareous
SASMDD0008	08-Mar-12	0.5	1	B22	Medium heavy clay	10YR52	5.7		Non-calcareous
SASMDD0008	26-Apr-15	0	0.02	O	Loam	7.5YR3/1	7	0.67	Non-calcareous
SASMDD0008	26-Apr-15	0.02	0.1	A1	Silty loam	7.5YR4/1	5.6	1.77	Non-calcareous
SASMDD0008	26-Apr-15	0.1	0.17	A2	Silty clay loam	7.5YR4/2	5.2	1.82	Non-calcareous
SASMDD0008	26-Apr-15	0.17	1	B2	Medium heavy clay	10YR4/1	5.9	3.05	Non-calcareous
SASMDD0009	30-Apr-15	0	0.1	NC	Not Collected	NC	8.7	0.06	Non-calcareous
SASMDD0009	30-Apr-15	0.1	0.2	NC	Not Collected	NC	9.1	0.09	Non-calcareous
SASMDD0009	30-Apr-15	0.2	0.3	NC	Not Collected	NC	9.2	0.14	Highly calcareous
SASMDD0009	30-Apr-15	0.3	0.4	NC	Not Collected	NC	9.3	0.14	Very highly calcareous
SASMDD0009	30-Apr-15	0.4	0.5	NC	Not Collected	NC	9.4	0.14	Very highly calcareous
SASMDD0009	30-Apr-15	0.5	0.6	NC	Not Collected	NC	9.4	0.12	Very highly calcareous
SASMDD0009	30-Apr-15	0.6	0.7	NC	Not Collected	NC	9.5	0.14	Very highly calcareous

Plot name	Date	Upper depth	Lower depth	Horizon	Texture	Colour when moist	pH	EC	Effervescence
SASMDD0009	30-Apr-15	0.7	0.8	NC	Not Collected	NC	9.7	0.14	Very highly calcareous
SASMDD0009	30-Apr-15	0.8	0.9	NC	Not Collected	NC	9.8	0.21	Very highly calcareous
SASMDD0011	16-Dec-12	0	0.1	A11	Loamy sand	5YR46	8.3	0.16	Moderately calcareous
SASMDD0011	16-Dec-12	0.1	0.25	A12	Sandy loam	2.5YR48	8.3	0.11	Slightly calcareous
SASMDD0011	16-Dec-12	0.25	0.55	A3	Loamy sand	5YR46	8.1	0.12	Highly calcareous
SASMDD0011	16-Dec-12	0.55	1	B1	Sandy loam	7.5YR56	8.2	6.8	Very highly calcareous
SASMDD0011	24-Apr-15	0	0.19		Loamy sand	5YR46	8.1	0.24	Not Collected
SASMDD0011	24-Apr-15	0.19	0.56		Clayey sand	5YR44	8.3	0.25	Not Collected
SASMDD0011	24-Apr-15	0.56	1		Sandy loam	5YR64	8.9	1.3	Not Collected
SASMDD0012	19-Nov-13	0	0.1	NC	Not Collected	NC			Not Collected
SASMDD0012	19-Nov-13	0.1	0.2	NC	Not Collected	NC			Not Collected
SASMDD0012	19-Nov-13	0.2	0.3	NC	Not Collected	NC			Not Collected
SASMDD0012	19-Nov-13	0.3	0.4	NC	Not Collected	NC			Not Collected
SASMDD0012	19-Nov-13	0.4	0.5	NC	Not Collected	NC			Not Collected
SASMDD0012	19-Nov-13	0.5	0.6	NC	Not Collected	NC			Not Collected
SASMDD0012	19-Nov-13	0.6	0.7	NC	Not Collected	NC			Not Collected
SASMDD0012	19-Nov-13	0.7	0.8	NC	Not Collected	NC			Not Collected
SASMDD0012	19-Nov-13	0.8	0.9	NC	Not Collected	NC			Not Collected
SASMDD0012	19-Nov-13	0.9	1	NC	Not Collected	NC			Not Collected
SASMDD0012	30-Apr-15	0	0.06	A1	Clay loam	7.5YR41	7.1	0.41	Non-calcareous
SASMDD0012	30-Apr-15	0.06	0.5	B2	Medium clay	7.5YR42	5.6	1.86	Non-calcareous
SASMDD0012	30-Apr-15	0.5	1	B3	Light clay	7.5YR53	4.6	2.57	Non-calcareous
SASMDD0013	18-Nov-13	0	0.02	B21	Light medium clay	10YR42	7.3	0.75	Non-calcareous
SASMDD0013	18-Nov-13	0.02	0.16	B22	Medium heavy clay	10YR42	6.7	0.82	Non-calcareous
SASMDD0013	18-Nov-13	0.16	1	B23	Medium heavy clay	10YR42	4.4	3.9	Non-calcareous
SASMDD0014	20-Nov-13	0	0.1	NC	Not Collected	NC	9	0.29	Highly calcareous
SASMDD0014	20-Nov-13	0.1	0.2	NC	Not Collected	NC	10	0.6	Very highly calcareous
SASMDD0014	20-Nov-13	0.2	0.3	NC	Not Collected	NC	9.7	1.92	Very highly calcareous
SASMDD0014	20-Nov-13	0.3	0.4	NC	Not Collected	NC	9.5	2.59	Very highly calcareous
SASMDD0014	20-Nov-13	0.4	0.5	NC	Not Collected	NC	9.3	3.2	Moderately calcareous
SASMDD0014	20-Nov-13	0.5	0.6	NC	Not Collected	NC	9.2	3.52	Moderately calcareous
SASMDD0014	20-Nov-13	0.6	0.7	NC	Not Collected	NC	8.9	3.81	Non-calcareous
SASMDD0014	20-Nov-13	0.7	0.8	NC	Not Collected	NC	8.6	3.99	Non-calcareous
SASMDD0014	20-Nov-13	0.8	0.9	NC	Not Collected	NC	8.2	5.43	Non-calcareous
SASMDD0014	20-Nov-13	0.9	1	NC	Not Collected	NC	8.1	5.04	Non-calcareous
SASMDD0016	25-Apr-15	0	0.11	A1	Sandy loam	5YR33	9	0.12	Highly calcareous
SASMDD0016	25-Apr-15	0.11	0.36	A2	Loam	5YR44	9.2	0.13	Very highly calcareous
SASMDD0016	25-Apr-15	0.36	1	B2	Sandy clay loam	5YR56	8.8	3.48	Very highly calcareous
SASMDD0017	30-Oct-14	0	0.15	A11	Sand	7.5YR34	6.2	0.14	Non-calcareous
SASMDD0017	30-Oct-14	0.15	0.5	A12	Sand	7.5YR46	6.7	0.06	Moderately calcareous
SASMDD0017	30-Oct-14	0.5	0.75	B1	Sandy loam	10HYR54	6.8	1.8	Highly calcareous

Plot name	Date	Upper depth	Lower depth	Horizon	Texture	Colour when moist	pH	EC	Effervescence
SASMDD0017	30-Oct-14	0.75	1	B2	Sandy clay loam	7.5YR5/8	7.4	2.57	Very highly calcareous
SASMDD0017	24-Apr-15	0	0.26	A1	Loamy sand	5YR4/4	7.3	0.19	Non-calcareous
SASMDD0017	24-Apr-15	0.26	0.45	A2	Sandy loam	5YR4/6	9.6	1.12	Moderately calcareous
SASMDD0017	24-Apr-15	0.45	1	B2	Sandy clay loam	5YR6/6	8.4	6.63	Highly calcareous
SASMDD0018	02-May-15	0	0.1	NC	Not Collected	NC	8.6	0.08	Non-calcareous
SASMDD0018	02-May-15	0.1	0.2	NC	Not Collected	NC	8.8	0.09	Non-calcareous
SASMDD0018	02-May-15	0.2	0.3	NC	Not Collected	NC	9	0.13	Moderately calcareous
SASMDD0018	02-May-15	0.3	0.4	NC	Not Collected	NC	9.3	0.15	Highly calcareous
SASMDD0018	02-May-15	0.4	0.5	NC	Not Collected	NC	9.5	0.2	Very highly calcareous
SASMDD0018	02-May-15	0.5	0.6	NC	Not Collected	NC	9.6	0.36	Very highly calcareous
SASMDD0018	02-May-15	0.6	0.7	NC	Not Collected	NC	9.5	0.73	Very highly calcareous
SASMDD0018	02-May-15	0.7	0.8	NC	Not Collected	NC	9.7	1.44	Very highly calcareous
SASMDD0018	02-May-15	0.8	0.9	NC	Not Collected	NC	10	1.34	Very highly calcareous
SASRIV0001	28-Apr-15	0	0.15	A1	Medium heavy clay	2.5YR4/1	6.7	0.2	Not Collected
SASRIV0001	28-Apr-15	0.15	0.85	B21	Heavy clay	2.5YR5/1	7.8	7.6	Not Collected
SASRIV0001	28-Apr-15	0.85	1	B22	Heavy clay	2.5YR5/1	7.7	9.2	Not Collected
SASRIV0002	28-Apr-15	0	0.06	A1	Medium clay	10YR4/1	7.9	0.07	Not Collected
SASRIV0002	28-Apr-15	0.06	0.55	B21	Medium heavy clay	10YR5/2	6	7.4	Not Collected
SASRIV0002	28-Apr-15	0.55	1	B22	Heavy clay	10YR6/2	6.1	8.8	Not Collected

Appendix 7. Bulk density

Plot name	Date	Sample depth	Fine earth bulk density
SASMDD0001	21-Sep-12	0-10	1.83
SASMDD0001	21-Sep-12	10-20	1.85
SASMDD0001	21-Sep-12	20-30	1.77
SASMDD0002	23-Sep-12	0-10	1.58
SASMDD0002	23-Sep-12	10-20	1.48
SASMDD0002	23-Sep-12	20-30	1.46
SASMDD0004	22-Jan-13	0-10	1.61
SASMDD0004	22-Jan-13	0-10	1.59
SASMDD0004	22-Jan-13	10-20	1.53
SASMDD0004	23-Apr-15	0-10	1.61
SASMDD0004	23-Apr-15	0-10	1.59
SASMDD0004	23-Apr-15	10-20	1.53
SASMDD0005	24-Sep-12	0-10	1.57
SASMDD0005	24-Sep-12	0-10	1.56
SASMDD0005	24-Sep-12	20-30	1.56
SASMDD0006	25-Sep-12	0-10	1.56
SASMDD0006	25-Sep-12	0-10	1.43
SASMDD0006	25-Sep-12	20-30	1.45
SASMDD0006	29-Apr-15	0-10	1.56
SASMDD0006	29-Apr-15	0-10	1.43
SASMDD0006	29-Apr-15	10-20	1.45
SASMDD0008	26-Apr-15	0-10	1.04
SASMDD0008	26-Apr-15	10-20	1.5
SASMDD0009	30-Apr-15	0-10	1.64
SASMDD0009	30-Apr-15	0-10	1.6
SASMDD0009	30-Apr-15	10-20	1.67
SASMDD0011	16-Dec-12	0-10	1.47
SASMDD0011	16-Dec-12	0-10	1.54
SASMDD0011	16-Dec-12	10-20	1.46
SASMDD0011	24-Apr-15	0-10	1.47
SASMDD0011	24-Apr-15	10-20	1.54
SASMDD0011	24-Apr-15	20-30	1.46
SASMDD0012	19-Nov-13	0-10	1.83
SASMDD0012	19-Nov-13	10-20	1.84
SASMDD0012	19-Nov-13	20-30	1.77
SASMDD0018	02-May-15	0-10	1.74
SASMDD0018	02-May-15	0-10	1.67
SASMDD0018	02-May-15	10-20	1.7

Appendix 8. Plant collection

* Denotes introduced species

Plot name	Date	Herbarium determination	Common name	SA Cons. Status
SASRIV0002	28-Apr-15	Atriplex vesicaria		
SASRIV0002	28-Apr-15	Atriplex lindleyi subsp. inflata		
SASRIV0002	28-Apr-15	Disphyma crassifolium subsp. clavellatum	Jellybeans	
SASRIV0002	28-Apr-15	Eragrostis australasica	Bamboo	
SASRIV0002	28-Apr-15	Maireana appressa	Grey Bluebush	
SASRIV0002	28-Apr-15	Maireana sp.		
SASRIV0002	28-Apr-15	Osteocarpum salsuginosum	Bonefruit	
SASRIV0002	28-Apr-15	Sclerolaena brachyptera		
SASRIV0002	28-Apr-15	Sclerolaena tricuspis	Giant Red Burr	
SASRIV0002	28-Apr-15	Tecticornia triandra	Desert Glasswort	
SASRIV0001	28-Apr-15	Atriplex leptocarpa	Creeping Saltbush	
SASRIV0001	28-Apr-15	Atriplex lindleyi subsp. lindleyi		
SASRIV0001	28-Apr-15	Atriplex rhagodioides	Silver saltbush	
SASRIV0001	28-Apr-15	Atriplex semibaccata	Australian Saltbush	
SASRIV0001	28-Apr-15	Calocephalus sonderi	Pale Beauty Heads	Rare Species
SASRIV0001	28-Apr-15	Chenopodium nitrariaceum	Branching Goosefoot	
SASRIV0001	28-Apr-15	Maireana sp.		
SASRIV0001	28-Apr-15	Sarcocolla praecox	Sarcocolla	
SASRIV0001	28-Apr-15	Sclerolaena brachyptera		
SASRIV0001	28-Apr-15	Sclerolaena muricata var. muricata		
SASRIV0001	28-Apr-15	Sclerolaena tricuspis	Giant Red Burr	
SASRIV0001	28-Apr-15	Tecticornia pergranulata		
SASMDD0018	02-May-15	Acacia rigens	Nealia	
SASMDD0018	02-May-15	Acacia wilhelmiana	Dwarf Nealie	
SASMDD0018	02-May-15	Atriplex stipitata	Bitter Saltbush	
SASMDD0018	02-May-15	Austrostipa scabra subsp. scabra		
SASMDD0018	02-May-15	Austrostipa sp.		
SASMDD0018	02-May-15	Chenopodium desertorum subsp. desertorum		
SASMDD0018	02-May-15	Codonocarpus cotinifolius	Bell fruit Tree	
SASMDD0018	02-May-15	Convolvulus eyreanus		
SASMDD0018	02-May-15	Crassula colorata var. colorata		
SASMDD0018	02-May-15	Dodonaea viscosa subsp. angustissima		
SASMDD0018	02-May-15	Eremophila ? glabra subsp. murrayana		
SASMDD0018	02-May-15	Eremophila glabra subsp. glabra		
SASMDD0018	02-May-15	Eremophila glabra subsp. murrayana		
SASMDD0018	02-May-15	Eriochiton sclerolaenoides	Woolly Bindii	
SASMDD0018	02-May-15	Eucalyptus cyanophylla	Blue leaved Mallee	
SASMDD0018	02-May-15	Eucalyptus cyanopylla		

Plot name	Date	Herbarium determination	Common name	SA Cons. Status
SASMDD0018	02-May-15	Eucalyptus gracilis	Red Mallee	
SASMDD0018	02-May-15	Eucalyptus incrassata	Angular Yellow Mallee	
SASMDD0018	02-May-15	Eucalyptus oleosa subsp. oleosa		
SASMDD0018	02-May-15	Eucalyptus socialis subsp. socialis		
SASMDD0018	02-May-15	Maireana radiata	Grey Bluebush	
SASMDD0018	02-May-15	Maireana sp.		
SASMDD0018	02-May-15	Myoporum platycarpum	Bastard Sandalwood	
SASMDD0018	02-May-15	Olearia lepidophylla	Club-moss Daisy-bush	
SASMDD0018	02-May-15	Olearia muelleri	Dusky Daisy-bush	
SASMDD0018	02-May-15	Olearia passerinoides subsp. passerinoides		
SASMDD0018	02-May-15	Olearia pimeleoides	Burrabunga	
SASMDD0018	02-May-15	Ptilotus seminudus	Rabbit Tails	
SASMDD0018	02-May-15	Sclerolaena diacantha	Grey Copper Burr	
SASMDD0018	02-May-15	Sclerolaena parviflora		
SASMDD0018	02-May-15	Senna artemisioides subsp. x petiolaris		
SASMDD0018	02-May-15	Solanum coactiliferum	Felted Nightshade	
SASMDD0018	02-May-15	Triodia scariosa	Porcupine Grass	
SASMDD0018	02-May-15	Vittadinia dissecta var. hirta		
SASMDD0018	02-May-15	Waitzia acuminata var. acuminata		
SASMDD0018	02-May-15	Westringia rigida	Stiff Western Rosemary	
SASMDD0018	02-May-15	Zygophyllum apiculatum	Callweed	
SASMDD0018	02-May-15	Zygophyllum aurantiacum subsp. aurantiacum		
SASMDD0017	30-Oct-14	Acacia colletioides	Pin Bush	
SASMDD0017	30-Oct-14	Acacia ligulata	Dune Wattle	
SASMDD0017	30-Oct-14	Atriplex sp.	orache	
SASMDD0017	30-Oct-14	Atriplex stipitata	Bitter Saltbush	
SASMDD0017	30-Oct-14	Beyeria opaca	Dark Turpentine Bush	
SASMDD0017	30-Oct-14	Billardiera cymosa	Sweet Apple-berry	
SASMDD0017	30-Oct-14	Dissocarpus paradoxus	Cannonball Burr	
SASMDD0017	30-Oct-14	Dodonaea viscosa subsp. angustissima		
SASMDD0017	30-Oct-14	Eucalyptus dumosa	Bunurdurk	
SASMDD0017	30-Oct-14	Eucalyptus incrassata	Angular Yellow Mallee	
SASMDD0017	30-Oct-14	Eucalyptus oleosa	Red Mallee	
SASMDD0017	30-Oct-14	Eucalyptus socialis	Christmas Mallee	
SASMDD0017	30-Oct-14	Grevillea huegelii	Comb Grevillea	
SASMDD0017	30-Oct-14	Lomandra leucocephala	Hoary Heads	
SASMDD0017	30-Oct-14	Maireana sp.		
SASMDD0017	30-Oct-14	Myoporum platycarpum	Bastard Sandalwood	
SASMDD0017	30-Oct-14	Olearia lepidophylla	Club-moss Daisy-bush	
SASMDD0017	30-Oct-14	Olearia pimeleoides	Burrabunga	
SASMDD0017	30-Oct-14	Olearia subspicata		
SASMDD0017	30-Oct-14	Poaceae sp.		

Plot name	Date	Herbarium determination	Common name	SA Cons. Status
SASMDD0017	30-Oct-14	Prostanthera aspalathoides	Pixie Caps	
SASMDD0017	30-Oct-14	Sclerolaena diacantha	Grey Copper Burr	
SASMDD0017	30-Oct-14	Sclerolaena obliquicuspis	Limestone Bindii	
SASMDD0017	30-Oct-14	Senna artemisioides subsp. x coriacea		
SASMDD0017	30-Oct-14	Senna artemisioides subsp. x petiolaris		
SASMDD0017	30-Oct-14	Triodia scariosa	Porcupine Grass	
SASMDD0017	30-Oct-14	Zygophyllum aurantiacum subsp. aurantiacum		
SASMDD0017	24-Apr-15	Acacia colletioides	Pin Bush	
SASMDD0017	24-Apr-15	Acacia ligulata	Dune Wattle	
SASMDD0017	24-Apr-15	Atriplex stipitata	Bitter Saltbush	
SASMDD0017	24-Apr-15	Austrostipa sp.		
SASMDD0017	24-Apr-15	Beyeria opaca	Dark Turpentine Bush	
SASMDD0017	24-Apr-15	Billardiera cymosa	Sweet Apple-berry	
SASMDD0017	24-Apr-15	Calotis hispidula	Bindy eye	
SASMDD0017	24-Apr-15	Chenopodium desertorum subsp. desertorum		
SASMDD0017	24-Apr-15	Crassula colorata var. colorata		
SASMDD0017	24-Apr-15	Dianella revoluta	Black-anther Flax-lily	
SASMDD0017	24-Apr-15	Dodonaea viscosa subsp. angustissima		
SASMDD0017	24-Apr-15	Enchylaena tomentosa var tomentosa x Maireana sp.		
SASMDD0017	24-Apr-15	Eremophila glabra subsp. murrayana		
SASMDD0017	24-Apr-15	Eucalyptus dumosa	Bunurdu	
SASMDD0017	24-Apr-15	Eucalyptus incrassata	Angular Yellow Mallee	
SASMDD0017	24-Apr-15	Eucalyptus oleosa subsp. oleosa		
SASMDD0017	24-Apr-15	Eucalyptus socialis subsp. socialis		
SASMDD0017	24-Apr-15	Eutaxia microphylla	Common Eutaxia	
SASMDD0017	24-Apr-15	Goodenia varia	Sticky Goodenia	
SASMDD0017	24-Apr-15	Grevillea huegelii	Comb Grevillea	
SASMDD0017	24-Apr-15	Lomandra leucocephala subsp. robusta		
SASMDD0017	24-Apr-15	Maireana sp.		
SASMDD0017	24-Apr-15	Myoporum platycarpum	Bastard Sandalwood	
SASMDD0017	24-Apr-15	Olearia lepidophylla	Club-moss Daisy-bush	
SASMDD0017	24-Apr-15	Olearia pimeleoides	Burrabunga	
SASMDD0017	24-Apr-15	Olearia subspicata		
SASMDD0017	24-Apr-15	Podolepis capillaris	Invisible Plant	
SASMDD0017	24-Apr-15	Prostanthera aspalathoides	Pixie Caps	
SASMDD0017	24-Apr-15	Schoenus subaphyllus	Desert Bog-rush	
SASMDD0017	24-Apr-15	Sclerolaena diacantha	Grey Copper Burr	
SASMDD0017	24-Apr-15	Sclerolaena obliquicuspis	Limestone Bindii	
SASMDD0017	24-Apr-15	Sclerolaena parviflora		
SASMDD0017	24-Apr-15	Senna artemisioides subsp. x coriacea		
SASMDD0017	24-Apr-15	Senna artemisioides subsp. x petiolaris		
SASMDD0017	24-Apr-15	Solanum coactiliferum	Felted Nightshade	

Plot name	Date	Herbarium determination	Common name	SA Cons. Status
SASMDD0017	24-Apr-15	Triodia scariosa	Porcupine Grass	
SASMDD0017	24-Apr-15	Vittadinia dissecta var. hirta		
SASMDD0017	24-Apr-15	Zygophyllum apiculatum	Callweed	
SASMDD0017	24-Apr-15	Zygophyllum aurantiacum subsp. aurantiacum		
SASMDD0016	25-Apr-15	Acacia nyssophylla	Pin Bush	
SASMDD0016	25-Apr-15	Acacia oswaldii	Boree	
SASMDD0016	25-Apr-15	Alectryon oleifolius subsp. canescens	Bullock Bush	
SASMDD0016	25-Apr-15	Atriplex stipitata	Bitter Saltbush	
SASMDD0016	25-Apr-15	Austrostipa scabra subsp. scabra		
SASMDD0016	25-Apr-15	Chenopod sp.		
SASMDD0016	25-Apr-15	Chenopodium curvispicatum	Cottony Saltbush	
SASMDD0016	25-Apr-15	Chenopodium desertorum	Desert Goosefoot	
SASMDD0016	25-Apr-15	Dissocarpus paradoxus	Cannonball Burr	
SASMDD0016	25-Apr-15	Dodonaea viscosa subsp. angustissima		
SASMDD0016	25-Apr-15	Einadia nutans	Climbing Saltbush	
SASMDD0016	25-Apr-15	Enchylaena tomentosa var tomentosa x Maireana sp.		
SASMDD0016	25-Apr-15	Eremophila glabra subsp. glabra		
SASMDD0016	25-Apr-15	Eucalyptus gracilis	Red Mallee	
SASMDD0016	25-Apr-15	Eucalyptus oleosa subsp. oleosa		
SASMDD0016	25-Apr-15	Geastrum sp.		
SASMDD0016	25-Apr-15	Maireana brevifolia	Cottonbush	
SASMDD0016	25-Apr-15	Maireana radiata	Grey Bluebush	
SASMDD0016	25-Apr-15	Maireana sp.		
SASMDD0016	25-Apr-15	Maireana triptera	Three-wing Bluebush	
SASMDD0016	25-Apr-15	Myoporum platycarpum	Bastard Sandalwood	
SASMDD0016	25-Apr-15	Olearia muelleri	Dusky Daisy-bush	
SASMDD0016	25-Apr-15	Ptilotus seminudus	Rabbit Tails	
SASMDD0016	25-Apr-15	Rhagodia ulicina	Spiny Goosefoot	
SASMDD0016	25-Apr-15	Salsola australis		
SASMDD0016	25-Apr-15	Sclerolaena diacantha	Grey Copper Burr	
SASMDD0016	25-Apr-15	Sclerolaena obliquicuspis	Limestone Bindii	
SASMDD0016	25-Apr-15	Senna artemisioides subsp. x coriacea		
SASMDD0016	25-Apr-15	Senna artemisioides subsp. x petiolaris		
SASMDD0016	25-Apr-15	Zygophyllum apiculatum	Callweed	
SASMDD0016	25-Apr-15	Zygophyllum aurantiacum subsp. aurantiacum		
SASMDD0014	20-Nov-13	Acacia nyssophylla	Pin Bush	
SASMDD0014	20-Nov-13	Acacia oswaldii	Boree	
SASMDD0014	20-Nov-13	Austrostipa elegantissima	Elegant Spear-grass	
SASMDD0014	20-Nov-13	Austrostipa trichophylla	Spear-grass	
SASMDD0014	20-Nov-13	Brachyscome ciliaris var. ciliaris		
SASMDD0014	20-Nov-13	Brassica tournefortii	Long-fruited Wild Turnip	
SASMDD0014	20-Nov-13	Callitris gracilis	Slender Cypress-pine	

Plot name	Date	Herbarium determination	Common name	SA Cons. Status
SASMDD0014	20-Nov-13	Calotis hispidula	Bindy eye	
SASMDD0014	20-Nov-13	*Carrichtera annua	Ward's Weed	
SASMDD0014	20-Nov-13	Convolvulus remotus	Grassy Bindweed	
SASMDD0014	20-Nov-13	Dissocarpus paradoxus	Cannonball Burr	
SASMDD0014	20-Nov-13	Dodonaea viscosa subsp. angustissima		
SASMDD0014	20-Nov-13	Enchylaena tomentosa var. tomentosa		
SASMDD0014	20-Nov-13	Eucalyptus largiflorens X E.gracilis		
SASMDD0014	20-Nov-13	Exocarpos aphyllus	Current Bush	
SASMDD0014	20-Nov-13	Hakea leucoptera subsp. leucoptera		
SASMDD0014	20-Nov-13	Limonium lobatum	Winged Sea Lavender	
SASMDD0014	20-Nov-13	Lysiana exocarpi subsp. exocarpi		
SASMDD0014	20-Nov-13	Maireana pyramidata	Black Bluebush	
SASMDD0014	20-Nov-13	Medicago minima var. minima		
SASMDD0014	20-Nov-13	Mesembryanthemum nodiflorum	Slender Ice-plant	
SASMDD0014	20-Nov-13	Olearia pimeleoides	Burrabunga	
SASMDD0014	20-Nov-13	Pimelea microcephala subsp. microcephala		
SASMDD0014	20-Nov-13	Podolepis capillaris	Invisible Plant	
SASMDD0014	20-Nov-13	Polycalymma stuartii	Poached-eggs Daisy	
SASMDD0014	20-Nov-13	Rhagodia spinescens	Berry Saltbush	
SASMDD0014	20-Nov-13	Rytidosperma caespitosum	Ringed Wallaby Grass	
SASMDD0014	20-Nov-13	*Schismus barbatus	Arabian Grass	
SASMDD0014	20-Nov-13	Sclerolaena decurrens	Green Copperburr	
SASMDD0014	20-Nov-13	Sclerolaena diacantha	Grey Copper Burr	
SASMDD0014	20-Nov-13	Senecio spanomerus		
SASMDD0014	20-Nov-13	Silene apetala	Mallee Catchfly	
SASMDD0013	18-Nov-13	Atriplex leptocarpa	Creeping Saltbush	
SASMDD0013	18-Nov-13	Atriplex lindleyi subsp. lindleyi		
SASMDD0013	18-Nov-13	Atriplex rhagodioides	Silver saltbush	
SASMDD0013	18-Nov-13	Brachyscome lineariloba	Dwarf Brachycome	
SASMDD0013	18-Nov-13	Bulbine semibarbata	Leek Lily	
SASMDD0013	18-Nov-13	Calandrinia calyptrata	Pink Purslane	
SASMDD0013	18-Nov-13	Calocephalus sonderi	Pale Beauty Heads	Rare Species
SASMDD0013	18-Nov-13	Chenopodium nitrariaceum	Branching Goosefoot	
SASMDD0013	18-Nov-13	Disphyma crassifolium subsp. clavellatum	Jellybeans	
SASMDD0013	18-Nov-13	Einadia nutans subsp. nutans		
SASMDD0013	18-Nov-13	Enchylaena tomentosa var. tomentosa		
SASMDD0013	18-Nov-13	Eucalyptus largiflorens	Black Box	
SASMDD0013	18-Nov-13	Frankenia sp.		
SASMDD0013	18-Nov-13	Lepidium africanum	Common Peppergrass	
SASMDD0013	18-Nov-13	Maireana pyramidata	Black Bluebush	
SASMDD0013	18-Nov-13	Mesembryanthemum nodiflorum	Slender Ice-plant	
SASMDD0013	18-Nov-13	Reichardia tingitana	False Sow-thistle	

Plot name	Date	Herbarium determination	Common name	SA Cons. Status
SASMDD0013	18-Nov-13	Sclerolaena tricuspid	Giant Red Burr	
SASMDD0013	18-Nov-13	Senecio runcinifolius	Tall Groundsel	
SASMDD0013	18-Nov-13	Senecio spanomerus		
SASMDD0013	18-Nov-13	Tetragonia moorei	Annual Spinach	
SASMDD0013	18-Nov-13	Xanthoparmelia sp.		
SASMDD0013	18-Nov-13	Zygophyllum iodocarpum	Violet Twin-leaf	
SASMDD0012	19-Nov-13	Acacia stenophylla	Dunthy	
SASMDD0012	19-Nov-13	Asteraceae sp.		
SASMDD0012	19-Nov-13	Atriplex lindleyi subsp. lindleyi		
SASMDD0012	19-Nov-13	Atriplex rhagodioides	Silver saltbush	
SASMDD0012	19-Nov-13	Atriplex stipitata	Bitter Saltbush	
SASMDD0012	19-Nov-13	Brachyscome ciliaris var. lanuginosa		
SASMDD0012	19-Nov-13	Brachyscome lineariloba	Dwarf Brachycome	
SASMDD0012	19-Nov-13	Calocephalus sonderi	Pale Beauty Heads	Rare Species
SASMDD0012	19-Nov-13	Calotis hispidula	Bindy eye	
SASMDD0012	19-Nov-13	Chenopodium nitrariaceum	Branching Goosefoot	
SASMDD0012	19-Nov-13	Crassula colorata var. acuminata		
SASMDD0012	19-Nov-13	Disphyma crassifolium subsp. clavellatum	Jellybeans	
SASMDD0012	19-Nov-13	Dodonaea viscosa subsp. angustissima		
SASMDD0012	19-Nov-13	Duma florulenta		
SASMDD0012	19-Nov-13	Einadia nutans subsp. nutans		
SASMDD0012	19-Nov-13	Enchylaena tomentosa var. tomentosa		
SASMDD0012	19-Nov-13	Eucalyptus largiflorens	Black Box	
SASMDD0012	19-Nov-13	Euphorbia drummondii	Balsam	
SASMDD0012	19-Nov-13	Lepidium africanum	Common Peppergrass	
SASMDD0012	19-Nov-13	Maireana pyramidata	Black Bluebush	
SASMDD0012	19-Nov-13	Mesembryanthemum nodiflorum	Slender Ice-plant	
SASMDD0012	19-Nov-13	Olearia pimeleoides	Burrabunga	
SASMDD0012	19-Nov-13	Pycnopus sanguineus		
SASMDD0012	19-Nov-13	Rhagodia sp.		
SASMDD0012	19-Nov-13	Rytidosperma setaceum	Smallflower Wallaby Grass	
SASMDD0012	19-Nov-13	Senecio spanomerus		
SASMDD0012	19-Nov-13	*Sonchus oleraceus	Annual Sowthistle	
SASMDD0012	19-Nov-13	Spergularia brevifolia		
SASMDD0012	19-Nov-13	Tetragonia moorei	Annual Spinach	
SASMDD0012	19-Nov-13	*Vulpia myuros f. myuros		
SASMDD0012	19-Nov-13	Xerochrysum bracteatum	Golden Everlasting	
SASMDD0012	19-Nov-13	Zygophyllum sp.		
SASMDD0011	16-Dec-12	Asphodelus fistulosus	Asphodel	
SASMDD0011	16-Dec-12	Atriplex stipitata	Bitter Saltbush	
SASMDD0011	16-Dec-12	*Carrichtera annua	Ward's Weed	
SASMDD0011	16-Dec-12	Dissocarpus paradoxus	Cannonball Burr	

Plot name	Date	Herbarium determination	Common name	SA Cons. Status
SASMDD0011	16-Dec-12	Dodonaea viscosa subsp. angustissima		
SASMDD0011	16-Dec-12	Eremophila glabra subsp. glabra		
SASMDD0011	16-Dec-12	Eremophila sturtii	Budda Bush	
SASMDD0011	16-Dec-12	Maireana pyramidata	Black Bluebush	
SASMDD0011	16-Dec-12	Maireana sedifolia	Dense Bluebush	
SASMDD0011	16-Dec-12	Maireana sp.		
SASMDD0011	16-Dec-12	Poaceae sp.		
SASMDD0011	16-Dec-12	Rhagodia sp.		
SASMDD0011	16-Dec-12	Scleranthus sp.	Scleranthus	
SASMDD0011	16-Dec-12	Sclerolaena patentiscuspis	Spear-fruit Saltbush	
SASMDD0011	16-Dec-12	Vittadinia sp.		
SASMDD0011	16-Dec-12	Zygophyllum apiculatum	Callweed	
SASMDD0011	24-Apr-15	Asphodelus fistulosus	Asphodel	
SASMDD0011	24-Apr-15	Austrostipa puberula	Fine-hairy Spear-grass	
SASMDD0011	24-Apr-15	Boerhavia coccinea	Tarvine	
SASMDD0011	24-Apr-15	*Carrichtera annua	Ward's Weed	
SASMDD0011	24-Apr-15	Chenopodium desertorum subsp. desertorum		
SASMDD0011	24-Apr-15	Convolvulus remotus	Grassy Bindweed	
SASMDD0011	24-Apr-15	Dodonaea viscosa subsp. angustissima		
SASMDD0011	24-Apr-15	Dysphania truncata		
SASMDD0011	24-Apr-15	Enneapogon avenaceus	Bottle Washers	
SASMDD0011	24-Apr-15	Eremophila glabra subsp. glabra		
SASMDD0011	24-Apr-15	Eremophila sturtii	Budda Bush	
SASMDD0011	24-Apr-15	Erodium sp.	Heron's-bill	
SASMDD0011	24-Apr-15	Euphorbia drummondii	Balsam	
SASMDD0011	24-Apr-15	*Heliotropium europaeum	A Heliotrope	
SASMDD0011	24-Apr-15	Maireana pyramidata	Black Bluebush	
SASMDD0011	24-Apr-15	Maireana sedifolia	Dense Bluebush	
SASMDD0011	24-Apr-15	Maireana sp.		
SASMDD0011	24-Apr-15	Marsdenia australis	Doubah	
SASMDD0011	24-Apr-15	*Medicago minima	Burr Medic	
SASMDD0011	24-Apr-15	Phyllanthus lacunarius	Carraweena Clover	
SASMDD0011	24-Apr-15	Salsola australis		
SASMDD0011	24-Apr-15	Salvia verbenaca	Vervain	
SASMDD0011	24-Apr-15	Sclerolaena patentiscuspis	Spear-fruit Saltbush	
SASMDD0011	24-Apr-15	Senna artemisioides subsp. x petiolaris		
SASMDD0011	24-Apr-15	Sida fibulifera	Pin Sida	
SASMDD0011	24-Apr-15	sida intricata	Neverfail	
SASMDD0011	24-Apr-15	Tragus australianus	Burr Grass	
SASMDD0011	24-Apr-15	Tribulus sp.		
SASMDD0009	06-Mar-12	Abutilon otocarpum	Desert Chinese Lantern	
SASMDD0009	06-Mar-12	Acacia oswaldii	Boree	

Plot name	Date	Herbarium determination	Common name	SA Cons. Status
SASMDD0009	06-Mar-12	Alectryon oleifolius	Bullock Bush	
SASMDD0009	06-Mar-12	Asphodelus fistulosus	Asphodel	
SASMDD0009	06-Mar-12	Atriplex stipitata	Bitter Saltbush	
SASMDD0009	06-Mar-12	Austrostipa drummondii	Cottony Spear-grass	
SASMDD0009	06-Mar-12	Austrostipa elegantissima	Elegant Spear-grass	
SASMDD0009	06-Mar-12	Austrostipa nitida	Balcarra Grass	
SASMDD0009	06-Mar-12	Bidens pilosa	Cobbler's Peg	
SASMDD0009	06-Mar-12	Brachyscome sp.		
SASMDD0009	06-Mar-12	Brassica tournefortii	Long-fruited Wild Turnip	
SASMDD0009	06-Mar-12	Callitris gracilis	Slender Cypress-pine	
SASMDD0009	06-Mar-12	Calotis erinacea	Tangled Burr-daisy	
SASMDD0009	06-Mar-12	Carpobrotus sp.		
SASMDD0009	06-Mar-12	*Cenchrus longispinus	A Spiny Burrgrass	
SASMDD0009	06-Mar-12	Chloris gayana	Rhodes Grass	
SASMDD0009	06-Mar-12	Citrullus lanatus	Afghan Melon	
SASMDD0009	06-Mar-12	Convolvulus remotus	Grassy Bindweed	
SASMDD0009	06-Mar-12	Dissocarpus paradoxus	Cannonball Burr	
SASMDD0009	06-Mar-12	Dodonaea viscosa subsp. angustissima		
SASMDD0009	06-Mar-12	Dysphania cristata		
SASMDD0009	06-Mar-12	Einadia nutans subsp. nutans		
SASMDD0009	06-Mar-12	Enchylaena tomentosa var. tomentosa		
SASMDD0009	06-Mar-12	Enneapogon avenaceus	Bottle Washers	
SASMDD0009	06-Mar-12	Erigeron bonariense	Flax-leaf fleabane	
SASMDD0009	06-Mar-12	Euphorbia drummondii	Balsam	
SASMDD0009	06-Mar-12	Gazania linearis	Gazania	
SASMDD0009	06-Mar-12	Hakea leucoptera	Kulooa	
SASMDD0009	06-Mar-12	Haloragis aspera	"Raspweed"	
SASMDD0009	06-Mar-12	*Lactuca serriola	Compass Plant	
SASMDD0009	06-Mar-12	Limonium lobatum	Winged Sea Lavender	
SASMDD0009	06-Mar-12	*Lycium ferocissimum	African Box-thorn	
SASMDD0009	06-Mar-12	Maireana pentatropis	Erect Mallee Bluebush	
SASMDD0009	06-Mar-12	Maireana pyramidata	Black Bluebush	
SASMDD0009	06-Mar-12	Myoporum platycarpum subsp. platycarpum		
SASMDD0009	06-Mar-12	Nicotiana goodspeedii	Small-flower Tobacco	
SASMDD0009	06-Mar-12	Olearia pimeleoides	Burrabunga	
SASMDD0009	06-Mar-12	Oxalis perennans	Woody-root oxalis	
SASMDD0009	06-Mar-12	Pimelea microcephala	Mallee Rice-flower	
SASMDD0009	06-Mar-12	Podolepis capillaris	Invisible Plant	
SASMDD0009	06-Mar-12	Reichardia tingitana	False Sow-thistle	
SASMDD0009	06-Mar-12	Rhagodia spinescens	Berry Saltbush	
SASMDD0009	06-Mar-12	Rytidosperma setaceum	Smallflower Wallaby Grass	
SASMDD0009	06-Mar-12	Salsola tragus	Russian thistle	

Plot name	Date	Herbarium determination	Common name	SA Cons. Status
SASMDD0009	06-Mar-12	Salvia verbenaca var. verbenaca		
SASMDD0009	06-Mar-12	*Schismus barbatus	Arabian Grass	
SASMDD0009	06-Mar-12	Sclerolaena diacantha	Grey Copper Burr	
SASMDD0009	06-Mar-12	Senna artemisioides subsp. x coriacea		
SASMDD0009	06-Mar-12	Sida ammophila	Sand Sida	
SASMDD0009	06-Mar-12	Urochloa panicoides	Liverseed Grass	
SASMDD0009	06-Mar-12	Vittadinia gracilis	Woolly New Holland Daisy	
SASMDD0009	30-Apr-15	Abutilon otocarpum	Desert Chinese Lantern	
SASMDD0009	30-Apr-15	Acacia oswaldii	Boree	
SASMDD0009	30-Apr-15	Alectryon oleifolius subsp. canescens	Bullock Bush	
SASMDD0009	30-Apr-15	Atriplex stipitata	Bitter Saltbush	
SASMDD0009	30-Apr-15	Austrostipa elegantissima	Elegant Spear-grass	
SASMDD0009	30-Apr-15	Austrostipa sp.		
SASMDD0009	30-Apr-15	Brachyscome ciliaris var. lanuginosa		
SASMDD0009	30-Apr-15	Callitris glaucophylla	White Cypress	
SASMDD0009	30-Apr-15	Carpobrotus sp. Short calyx (S.T.Blake 20451)		
SASMDD0009	30-Apr-15	*Carrichtera annua	Ward's Weed	
SASMDD0009	30-Apr-15	*Centaurea melitensis	Cockspur Thistle	
SASMDD0009	30-Apr-15	Cucumis myriocarpus	Gooseberry Cucumber	
SASMDD0009	30-Apr-15	Dissocarpus paradoxus	Cannonball Burr	
SASMDD0009	30-Apr-15	Dodonaea viscosa subsp. angustissima		
SASMDD0009	30-Apr-15	Einadia nutans subsp. nutans		
SASMDD0009	30-Apr-15	Erodium sp.	Heron's-bill	
SASMDD0009	30-Apr-15	Euphorbia drummondii s.l		
SASMDD0009	30-Apr-15	Hakea tephrosperma	Hooked Needlewood	Rare Species
SASMDD0009	30-Apr-15	Limonium lobatum	Winged Sea Lavender	
SASMDD0009	30-Apr-15	*Lycium ferocissimum	African Box-thorn	
SASMDD0009	30-Apr-15	Maireana pyramidata	Black Bluebush	
SASMDD0009	30-Apr-15	Maireana sp.		
SASMDD0009	30-Apr-15	*Medicago minima	Burr Medic	
SASMDD0009	30-Apr-15	Myoporum platycarpum	Bastard Sandalwood	
SASMDD0009	30-Apr-15	Nicotiana sp.	Tobacco	
SASMDD0009	30-Apr-15	Olearia pimeleoides	Burrabunga	
SASMDD0009	30-Apr-15	Oxalis perennans	Woody-root oxalis	
SASMDD0009	30-Apr-15	Pimelea microcephala subsp. microcephala		
SASMDD0009	30-Apr-15	Podolepis capillaris	Invisible Plant	
SASMDD0009	30-Apr-15	Rhagodia spinescens	Berry Saltbush	
SASMDD0009	30-Apr-15	Rytidosperma caespitosum	Ringed Wallaby Grass	
SASMDD0009	30-Apr-15	Salsola australis		
SASMDD0009	30-Apr-15	Salvia verbenaca	Vervain	
SASMDD0009	30-Apr-15	Sclerolaena diacantha	Grey Copper Burr	
SASMDD0009	30-Apr-15	Senna artemisioides subsp. x petiolaris		

Plot name	Date	Herbarium determination	Common name	SA Cons. Status
SASMDD0009	30-Apr-15	Tragus australianus	Burr Grass	
SASMDD0008	08-Mar-12	Atriplex acutibractea subsp. karoniensis		
SASMDD0008	08-Mar-12	Atriplex holocarpa	Pop Saltbush	
SASMDD0008	08-Mar-12	Atriplex leptocarpa	Creeping Saltbush	
SASMDD0008	08-Mar-12	Atriplex lindleyi subsp. lindleyi		
SASMDD0008	08-Mar-12	Atriplex nummularia	Old Man Saltbush	
SASMDD0008	08-Mar-12	Atriplex semibaccata	Australian Saltbush	
SASMDD0008	08-Mar-12	Calotis cuneata	Blue Burr Daisy	
SASMDD0008	08-Mar-12	Calotis cuneifolia	Bindi-eye	
SASMDD0008	08-Mar-12	Centipeda cunninghamii	A Sneezeweed	
SASMDD0008	08-Mar-12	Chenopodium nitrariaceum	Branching Goosefoot	
SASMDD0008	08-Mar-12	*Chondrilla juncea	Gum Succory	
SASMDD0008	08-Mar-12	Cyperus gymnocaulos	Spiny Sedge	
SASMDD0008	08-Mar-12	Disphyma crassifolium subsp. clavellatum	Jellybeans	
SASMDD0008	08-Mar-12	Dittrichia graveolens	Stinkwort	
SASMDD0008	08-Mar-12	Duma florulenta		
SASMDD0008	08-Mar-12	Einadia nutans subsp. nutans		
SASMDD0008	08-Mar-12	Enchylaena tomentosa var. tomentosa		
SASMDD0008	08-Mar-12	Erigeron bonariense	Flax-leaf fleabane	
SASMDD0008	08-Mar-12	Eucalyptus largiflorens	Black Box	
SASMDD0008	08-Mar-12	Glinus lotoides	Hairy Carpet Weed	
SASMDD0008	08-Mar-12	Heliotropium sp.	Cherry pie	
SASMDD0008	08-Mar-12	Maireana brevifolia	Cottonbush	
SASMDD0008	08-Mar-12	Osteocarpum sp.		
SASMDD0008	08-Mar-12	Oxalis perennans	Woody-root oxalis	
SASMDD0008	08-Mar-12	Paspalidium jubiflorum	Warrego Summer Grass	
SASMDD0008	08-Mar-12	Persicaria lapathifolia	Pale Knotweed	
SASMDD0008	08-Mar-12	Sclerolaena holtiana		
SASMDD0008	08-Mar-12	Sclerolaena muricata var. muricata		
SASMDD0008	08-Mar-12	Senecio cunninghamii var. cunninghamii		
SASMDD0008	08-Mar-12	*Solanum nigrum	Black Nightshade	
SASMDD0008	08-Mar-12	Sphaeromorphaea australis		
SASMDD0008	08-Mar-12	Stemodia florulenta	Bluerod	
SASMDD0008	08-Mar-12	Tetragonia sp.		
SASMDD0008	08-Mar-12	Teucrium racemosum	Grey Germander	
SASMDD0008	08-Mar-12	Vittadinia gracilis	Woolly New Holland Daisy	
SASMDD0008	08-Mar-12	Zygophyllum glaucum	Annual Twinleaf	
SASMDD0008	26-Apr-15	Atriplex leptocarpa	Creeping Saltbush	
SASMDD0008	26-Apr-15	Atriplex semibaccata	Australian Saltbush	
SASMDD0008	26-Apr-15	Atriplex sp.	orache	
SASMDD0008	26-Apr-15	Atriplex stipitata	Bitter Saltbush	
SASMDD0008	26-Apr-15	Atriplex suberecta	Lagoon Saltbush	

Plot name	Date	Herbarium determination	Common name	SA Cons. Status
SASMDD0008	26-Apr-15	<i>Calotis cuneifolia</i>	Bindi-eye	
SASMDD0008	26-Apr-15	<i>Centipeda</i> sp.		
SASMDD0008	26-Apr-15	<i>Dittrichia graveolens</i>	Stinkwort	
SASMDD0008	26-Apr-15	<i>Eremophila divaricata</i> subsp. <i>divaricata</i>		
SASMDD0008	26-Apr-15	<i>Eucalyptus camaldulensis</i> subsp. <i>camaldulensis</i>		
SASMDD0008	26-Apr-15	<i>Euphorbia</i> sp.	Milkweed	
SASMDD0008	26-Apr-15	<i>Maireana brevifolia</i>	Cottonbush	
SASMDD0008	26-Apr-15	<i>Maireana pentagona</i>	Hairy Bluebush	Rare Species
SASMDD0008	26-Apr-15	<i>Maireana pyramidata</i>	Black Bluebush	
SASMDD0008	26-Apr-15	<i>Rhagodia spinescens</i>	Berry Saltbush	
SASMDD0008	26-Apr-15	<i>Sclerolaena muricata</i> var. <i>muricata</i>		
SASMDD0008	26-Apr-15	<i>Senecio cunninghamii</i> var. <i>cunninghamii</i>		
SASMDD0008	26-Apr-15	<i>Spergularia</i> sp.		
SASMDD0008	26-Apr-15	<i>Stemodia florulenta</i>	Bluerod	
SASMDD0008	26-Apr-15	<i>Vittadinia gracilis</i>	Woolly New Holland Daisy	
SASMDD0006	25-Sep-12	<i>Atriplex stipitata</i>	Bitter Saltbush	
SASMDD0006	25-Sep-12	<i>Austrostipa nitida</i>	Balcarra Grass	
SASMDD0006	25-Sep-12	<i>Cassytha melantha</i>	Coarse Dodder-laurel	
SASMDD0006	25-Sep-12	<i>Chenopodium curvispicatum</i>	Cottony Saltbush	
SASMDD0006	25-Sep-12	<i>Chenopodium desertorum</i> subsp. <i>desertorum</i>		
SASMDD0006	25-Sep-12	<i>Dodonia stenozyga</i>	Desert Hop-Bush	
SASMDD0006	25-Sep-12	<i>Dodonia viscosa</i> subsp. <i>angustissima</i>		
SASMDD0006	25-Sep-12	<i>Enchylaena tomentosa</i> var. <i>tomentosa</i> x <i>Maireana georgei</i>		
SASMDD0006	25-Sep-12	<i>Eriochiton sclerolaenoides</i>	Woolly Bindii	
SASMDD0006	25-Sep-12	<i>Eucalyptus dumosa</i>	Bunurduk	
SASMDD0006	25-Sep-12	<i>Eucalyptus oleosa</i> subsp. <i>oleosa</i>		
SASMDD0006	25-Sep-12	<i>Eucalyptus socialis</i> subsp. <i>socialis</i>		
SASMDD0006	25-Sep-12	<i>Eucalyptus</i> sp.		
SASMDD0006	25-Sep-12	<i>Exocarpos aphyllus</i>	Current Bush	
SASMDD0006	25-Sep-12	<i>Grevillea huegelii</i>	Comb Grevillea	
SASMDD0006	25-Sep-12	<i>Maireana georgei</i>	Golden Bluebush	
SASMDD0006	25-Sep-12	<i>Maireana pentatropis</i>	Erect Mallee Bluebush	
SASMDD0006	25-Sep-12	<i>Maireana trichoptera</i>	Pink-seeded Bluebush, Downy Bluebush	
SASMDD0006	25-Sep-12	<i>Maireana triptera</i>	Three-wing Bluebush	
SASMDD0006	25-Sep-12	<i>Myoporum platycarpum</i> subsp. <i>platycarpum</i>		
SASMDD0006	25-Sep-12	<i>Olearia pimeleoides</i>	Burrabunga	
SASMDD0006	25-Sep-12	<i>Pimelea microcephala</i> subsp. <i>microcephala</i>		
SASMDD0006	25-Sep-12	<i>Podolepis capillaris</i>	Invisible Plant	
SASMDD0006	25-Sep-12	<i>Pycnosorus pleiocephalus</i>	Soft Billy-buttons	
SASMDD0006	25-Sep-12	<i>Sclerolaena diacantha</i>	Grey Copper Burr	
SASMDD0006	25-Sep-12	<i>Senna artemisioides</i> subsp. x <i>coriacea</i>		
SASMDD0006	25-Sep-12	<i>Senna artemisioides</i> subsp. x <i>petiolaris</i>		

Plot name	Date	Herbarium determination	Common name	SA Cons. Status
SASMDD0006	25-Sep-12	Triodia scariosa	Porcupine Grass	
SASMDD0006	25-Sep-12	Vittadinia cervicularis var. cervicularis		
SASMDD0006	25-Sep-12	Wahlenbergia sp.		
SASMDD0006	25-Sep-12	Zygophyllum aurantiacum subsp. aurantiacum		
SASMDD0006	29-Apr-15	Acacia oswaldii	Boree	
SASMDD0006	29-Apr-15	Alectryon oleifolius subsp. canescens	Bullock Bush	
SASMDD0006	29-Apr-15	Atriplex stipitata	Bitter Saltbush	
SASMDD0006	29-Apr-15	Austrostipa elegantissima	Elegant Spear-grass	
SASMDD0006	29-Apr-15	Cassytha melantha	Coarse Dodder-laurel	
SASMDD0006	29-Apr-15	Chenopodium desertorum subsp. desertorum		
SASMDD0006	29-Apr-15	Dissocarpus paradoxus	Cannonball Burr	
SASMDD0006	29-Apr-15	Dodonaea stenozyga	Desert Hop-Bush	
SASMDD0006	29-Apr-15	Dodonaea viscosa subsp. angustissima		
SASMDD0006	29-Apr-15	Enchylaena tomentosa var tomentosa x Maireana sp.		
SASMDD0006	29-Apr-15	Enchylaena tomentosa var. tomentosa		
SASMDD0006	29-Apr-15	Eriochiton sclerolaenoides	Woolly Bindii	
SASMDD0006	29-Apr-15	Eucalyptus dumosa	Bunurduk	
SASMDD0006	29-Apr-15	Eucalyptus oleosa subsp. oleosa		
SASMDD0006	29-Apr-15	Eucalyptus socialis subsp. socialis		
SASMDD0006	29-Apr-15	Exocarpos aphyllus	Current Bush	
SASMDD0006	29-Apr-15	Grevillea huegelii	Comb Grevillea	
SASMDD0006	29-Apr-15	Lomandra effusa	Cocky's Bootlace	
SASMDD0006	29-Apr-15	Maireana brevifolia	Cottonbush	
SASMDD0006	29-Apr-15	Maireana pyramidata	Black Bluebush	
SASMDD0006	29-Apr-15	Maireana radiata	Grey Bluebush	
SASMDD0006	29-Apr-15	Maireana sp.		
SASMDD0006	29-Apr-15	Maireana triptera	Three-wing Bluebush	
SASMDD0006	29-Apr-15	Minuria cunninghamii	Bush Minuria	
SASMDD0006	29-Apr-15	Myoporum platycarpum	Bastard Sandalwood	
SASMDD0006	29-Apr-15	Olearia pimeleoides	Burrabunga	
SASMDD0006	29-Apr-15	Oxalis perennans	Woody-root oxalis	
SASMDD0006	29-Apr-15	Pimelea microcephala subsp. microcephala		
SASMDD0006	29-Apr-15	Psilocaulon granulicaule		
SASMDD0006	29-Apr-15	Ptilotus seminudus	Rabbit Tails	
SASMDD0006	29-Apr-15	Rhagodia spinescens	Berry Saltbush	
SASMDD0006	29-Apr-15	Salsola australis		
SASMDD0006	29-Apr-15	Sclerolaena diacantha	Grey Copper Burr	
SASMDD0006	29-Apr-15	Sclerolaena obliquicuspis	Limestone Bindii	
SASMDD0006	29-Apr-15	Senna artemisioides subsp. x coriacea		
SASMDD0006	29-Apr-15	Senna artemisioides subsp. x petiolaris		
SASMDD0006	29-Apr-15	Triodia scariosa	Porcupine Grass	
SASMDD0006	29-Apr-15	Westringia rigida	Stiff Western Rosemary	

Plot name	Date	Herbarium determination	Common name	SA Cons. Status
SASMDD0006	29-Apr-15	Zygophyllum apiculatum	Callweed	
SASMDD0006	29-Apr-15	Zygophyllum aurantiacum subsp. aurantiacum		
SASMDD0005	24-Sep-12	Atriplex stipitata	Bitter Saltbush	
SASMDD0005	24-Sep-12	Austrostipa nitida	Balcarra Grass	
SASMDD0005	24-Sep-12	Callitris glaucophylla	White Cypress	
SASMDD0005	24-Sep-12	Cassytha melantha	Coarse Dodder-laurel	
SASMDD0005	24-Sep-12	Convolvulus remotus	Grassy Bindweed	
SASMDD0005	24-Sep-12	Dissocarpus paradoxus	Cannonball Burr	
SASMDD0005	24-Sep-12	Dodonaea viscosa subsp. angustissima		
SASMDD0005	24-Sep-12	Enchylaena tomentosa var. tomentosa x Maireana georgei		
SASMDD0005	24-Sep-12	Eremophila glabra subsp. glabra		
SASMDD0005	24-Sep-12	Eremophila sturtii	Budda Bush	
SASMDD0005	24-Sep-12	Grevillea huegelii	Comb Grevillea	
SASMDD0005	24-Sep-12	Lomandra effusa	Cocky's Bootlace	
SASMDD0005	24-Sep-12	Maireana georgei	Golden Bluebush	
SASMDD0005	24-Sep-12	Maireana pentatropis	Erect Mallee Bluebush	
SASMDD0005	24-Sep-12	Maireana pyramidata	Black Bluebush	
SASMDD0005	24-Sep-12	Maireana trichoptera	Pink-seeded Bluebush, Downy Bluebush	
SASMDD0005	24-Sep-12	Marsdenia australis	Doubah	
SASMDD0005	24-Sep-12	Olearia pimeleoides	Burrabunga	
SASMDD0005	24-Sep-12	Pimelea microcephala subsp. microcephala		
SASMDD0005	24-Sep-12	Pycnosorus pleiocephalus	Soft Billy-buttons	
SASMDD0005	24-Sep-12	Reichardia tingitana	False Sow-thistle	
SASMDD0005	24-Sep-12	Salvia verbenaca var. vernalis		
SASMDD0005	24-Sep-12	Sclerolaena diacantha	Grey Copper Burr	
SASMDD0005	24-Sep-12	Senna artemisioides subsp. x coriacea		
SASMDD0005	24-Sep-12	Senna artemisioides subsp. x petiolaris		
SASMDD0005	24-Sep-12	Zygophyllum apiculatum	Callweed	
SASMDD0005	24-Sep-12	Zygophyllum aurantiacum subsp. aurantiacum		
SASMDD0005	29-Apr-15	Atriplex stipitata	Bitter Saltbush	
SASMDD0005	29-Apr-15	Austrostipa puberula	Fine-hairy Spear-grass	
SASMDD0005	29-Apr-15	Austrostipa scabra subsp. scabra		
SASMDD0005	29-Apr-15	Callitris glaucophylla	White Cypress	
SASMDD0005	29-Apr-15	*Carrichtera annua	Ward's Weed	
SASMDD0005	29-Apr-15	*Carthamus lanatus	Saffron Thistle	
SASMDD0005	29-Apr-15	Dissocarpus paradoxus	Cannonball Burr	
SASMDD0005	29-Apr-15	Dodonaea viscosa subsp. angustissima		
SASMDD0005	29-Apr-15	Enchylaena tomentosa var. tomentosa		
SASMDD0005	29-Apr-15	Eremophila sturtii	Budda Bush	
SASMDD0005	29-Apr-15	Euphorbia drummondii s.l		
SASMDD0005	29-Apr-15	Grevillea huegelii	Comb Grevillea	
SASMDD0005	29-Apr-15	Lomandra effusa	Cocky's Bootlace	

Plot name	Date	Herbarium determination	Common name	SA Cons. Status
SASMDD0005	29-Apr-15	Maireana pentatropis	Erect Mallee Bluebush	
SASMDD0005	29-Apr-15	Maireana pyramidata	Black Bluebush	
SASMDD0005	29-Apr-15	Marsdenia australis	Doubah	
SASMDD0005	29-Apr-15	*Medicago minima	Burr Medic	
SASMDD0005	29-Apr-15	Olearia pimeleoides	Burrabunga	
SASMDD0005	29-Apr-15	Pimelea microcephala subsp. microcephala		
SASMDD0005	29-Apr-15	Psilocaulon granulicaule		
SASMDD0005	29-Apr-15	Rhagodia spinescens	Berry Saltbush	
SASMDD0005	29-Apr-15	Salvia verbenaca	Vervain	
SASMDD0005	29-Apr-15	Sclerolaena diacantha	Grey Copper Burr	
SASMDD0005	29-Apr-15	Sclerolaena obliquicuspis	Limestone Bindii	
SASMDD0005	29-Apr-15	Senna artemisioides subsp. filifolia		
SASMDD0005	29-Apr-15	Senna artemisioides subsp. x coriacea		
SASMDD0005	29-Apr-15	Senna artemisioides subsp. x petiolaris		
SASMDD0005	29-Apr-15	*Sisymbrium erysimoides	Smooth Mustard	
SASMDD0005	29-Apr-15	Solanum coactiliferum	Felted Nightshade	
SASMDD0005	29-Apr-15	Zygophyllum apiculatum	Callweed	
SASMDD0005	29-Apr-15	Zygophyllum aurantiacum subsp. aurantiacum		
SASMDD0004	22-Jan-13	Atriplex lindleyi subsp. lindleyi		
SASMDD0004	22-Jan-13	Austrostipa nitida	Balcarra Grass	
SASMDD0004	22-Jan-13	*Carrichtera annua	Ward's Weed	
SASMDD0004	22-Jan-13	Eriochiton sclerolaenoides	Woolly Bindii	
SASMDD0004	22-Jan-13	Limonium lobatum	Winged Sea Lavender	
SASMDD0004	22-Jan-13	Maireana pyramidata	Black Bluebush	
SASMDD0004	22-Jan-13	Maireana turbinata		
SASMDD0004	22-Jan-13	Rhodanthe stuartiana		
SASMDD0004	22-Jan-13	Salvia verbenaca var. vernalis		
SASMDD0004	22-Jan-13	Sclerolaena decurrens	Green Copperburr	
SASMDD0004	22-Jan-13	Sclerolaena obliquicuspis	Limestone Bindii	
SASMDD0004	22-Jan-13	Senecio cunninghamii var. cunninghamii		
SASMDD0004	22-Jan-13	Sida intricata	Neverfail	
SASMDD0004	22-Jan-13	Vittadinia gracilis	Woolly New Holland Daisy	
SASMDD0004	23-Apr-15	Atriplex stipitata	Bitter Saltbush	
SASMDD0004	23-Apr-15	Atriplex vesicaria	Bladder Saltbush	
SASMDD0004	23-Apr-15	*Carrichtera annua	Ward's Weed	
SASMDD0004	23-Apr-15	Crassula colorata var. colorata		
SASMDD0004	23-Apr-15	Dysphania truncata		
SASMDD0004	23-Apr-15	*Heliotropium europaeum	A Heliotrope	
SASMDD0004	23-Apr-15	Limonium lobatum	Winged Sea Lavender	
SASMDD0004	23-Apr-15	Maireana pyramidata	Black Bluebush	
SASMDD0004	23-Apr-15	Maireana sp.		
SASMDD0004	23-Apr-15	*Medicago minima	Burr Medic	

Plot name	Date	Herbarium determination	Common name	SA Cons. Status
SASMDD0004	23-Apr-15	Podaxis pistillaris		
SASMDD0004	23-Apr-15	Sclerolaena patentiscuspis	Spear-fruit Saltbush	
SASMDD0004	23-Apr-15	Senna artemisioides subsp. x petiolaris		
SASMDD0004	23-Apr-15	sida intricata	Neverfail	
SASMDD0003	23-Sep-12	Acacia colletioides	Pin Bush	
SASMDD0003	23-Sep-12	Austrostipa nitida	Balcarra Grass	
SASMDD0003	23-Sep-12	Beyeria opaca	Dark Turpentine Bush	
SASMDD0003	23-Sep-12	Chenopodium curvispicatum	Cottony Saltbush	
SASMDD0003	23-Sep-12	Chenopodium desertorum subsp. desertorum		
SASMDD0003	23-Sep-12	Dodonaea viscosa subsp. angustissima		
SASMDD0003	23-Sep-12	Enchylaena tomentosa var. tomentosa		
SASMDD0003	23-Sep-12	Eremophila glabra subsp. glabra		
SASMDD0003	23-Sep-12	Eucalyptus gracilis	Red Mallee	
SASMDD0003	23-Sep-12	Eucalyptus oleosa subsp. oleosa		
SASMDD0003	23-Sep-12	Eucalyptus socialis subsp. socialis		
SASMDD0003	23-Sep-12	Maireana georgei	Golden Bluebush	
SASMDD0003	23-Sep-12	Maireana pentatropis	Erect Mallee Bluebush	
SASMDD0003	23-Sep-12	Maireana radiata	Grey Bluebush	
SASMDD0003	23-Sep-12	Maireana sedifolia	Dense Bluebush	
SASMDD0003	23-Sep-12	Maireana trichoptera	Pink-seeded Bluebush, Downy Bluebush	
SASMDD0003	23-Sep-12	Myoporum platycarpum	Bastard Sandalwood	
SASMDD0003	23-Sep-12	Olearia muelleri	Dusky Daisy-bush	
SASMDD0003	23-Sep-12	Olearia pimeleoides	Burrabunga	
SASMDD0003	23-Sep-12	Sclerolaena diacantha	Grey Copper Burr	
SASMDD0003	23-Sep-12	Senna artemisioides subsp. filifolia		
SASMDD0003	23-Sep-12	Senna artemisioides subsp. x coriacea		
SASMDD0003	23-Sep-12	Solanum coactiliferum	Felted Nightshade	
SASMDD0003	23-Sep-12	Triodia scariosa	Porcupine Grass	
SASMDD0003	23-Sep-12	Vittadinia sp.		
SASMDD0003	23-Sep-12	Westringia rigida	Stiff Western Rosemary	
SASMDD0003	23-Sep-12	Zygophyllum auranthiacum subsp. auranthiacum		
SASMDD0003	01-May-15	Acacia ligulata	Dune Wattle	
SASMDD0003	01-May-15	Austrostipa nitida	Balcarra Grass	
SASMDD0003	01-May-15	Austrostipa puberula	Fine-hairy Spear-grass	
SASMDD0003	01-May-15	Austrostipa scabra subsp. scabra		
SASMDD0003	01-May-15	Austrostipa sp.		
SASMDD0003	01-May-15	Chenopod sp.		
SASMDD0003	01-May-15	Chenopodium desertorum subsp. desertorum		
SASMDD0003	01-May-15	Chenopodium desertorum subsp. rectum		
SASMDD0003	01-May-15	Convolvulus eyreanus		
SASMDD0003	01-May-15	Crassula colorata var. colorata		
SASMDD0003	01-May-15	Dysphania cristata	Crested Crumbweed	

Plot name	Date	Herbarium determination	Common name	SA Cons. Status
SASMDD0003	01-May-15	Eucalyptus cyanophylla	Blue leaved Mallee	
SASMDD0003	01-May-15	Eucalyptus gracilis	Red Mallee	
SASMDD0003	01-May-15	Eucalyptus oleosa subsp. oleosa		
SASMDD0003	01-May-15	Eucalyptus socialis subsp. socialis		
SASMDD0003	01-May-15	Maireana brevifolia	Cottonbush	
SASMDD0003	01-May-15	Maireana radiata	Grey Bluebush	
SASMDD0003	01-May-15	Maireana sp.		
SASMDD0003	01-May-15	Myoporum platycarpum	Bastard Sandalwood	
SASMDD0003	01-May-15	Sclerolaena diacantha	Grey Copper Burr	
SASMDD0003	01-May-15	Sclerolaena parviflora		
SASMDD0003	01-May-15	Senna artemisioides subsp. filifolia		
SASMDD0003	01-May-15	Senna artemisioides subsp. x coriacea		
SASMDD0003	01-May-15	Solanum coactiliferum	Felted Nightshade	
SASMDD0003	01-May-15	Triodia sp.		
SASMDD0003	01-May-15	Vittadinia sp.		
SASMDD0003	01-May-15	Waitzia acuminata var. acuminata		
SASMDD0003	01-May-15	Zygophyllum apiculatum	Callweed	
SASMDD0003	01-May-15	Zygophyllum aurantiacum subsp. aurantiacum		
SASMDD0002	23-Sep-12	Atriplex stipitata	Bitter Saltbush	
SASMDD0002	23-Sep-12	Atriplex vesicaria	Bladder Saltbush	
SASMDD0002	23-Sep-12	Austrostipa drummondii	Cottony Spear-grass	
SASMDD0002	23-Sep-12	Austrostipa sp.		
SASMDD0002	23-Sep-12	Beyeria opaca	Dark Turpentine Bush	
SASMDD0002	23-Sep-12	Chenopodium curvispicatum	Cottony Saltbush	
SASMDD0002	23-Sep-12	Chenopodium desertorum subsp. desertorum		
SASMDD0002	23-Sep-12	Dodonaea viscosa subsp. angustissima		
SASMDD0002	23-Sep-12	Enchylaena tomentosa var. tomentosa		
SASMDD0002	23-Sep-12	Enchylaena tomentosa var. tomentosa x Maireana georgei		
SASMDD0002	23-Sep-12	Eremophila deserti	Turkey-bush	
SASMDD0002	23-Sep-12	Eremophila glabra subsp. glabra		
SASMDD0002	23-Sep-12	Eucalyptus dumosa	Bunurdu	
SASMDD0002	23-Sep-12	Eucalyptus oleosa	Red Mallee	
SASMDD0002	23-Sep-12	Eucalyptus oleosa subsp. oleosa		
SASMDD0002	23-Sep-12	Eucalyptus socialis subsp. socialis		
SASMDD0002	23-Sep-12	Exocarpos aphyllus	Current Bush	
SASMDD0002	23-Sep-12	Maireana georgei	Golden Bluebush	
SASMDD0002	23-Sep-12	Maireana pentatropis	Erect Mallee Bluebush	
SASMDD0002	23-Sep-12	Maireana radiata	Grey Bluebush	
SASMDD0002	23-Sep-12	Maireana sedifolia	Dense Bluebush	
SASMDD0002	23-Sep-12	Myoporum platycarpum	Bastard Sandalwood	
SASMDD0002	23-Sep-12	Olearia muelleri	Dusky Daisy-bush	
SASMDD0002	23-Sep-12	Olearia pimeleoides	Burrabunga	

Plot name	Date	Herbarium determination	Common name	SA Cons. Status
SASMDD0002	23-Sep-12	Rhagodia spinescens	Berry Saltbush	
SASMDD0002	23-Sep-12	Sclerolaena diacantha	Grey Copper Burr	
SASMDD0002	23-Sep-12	Sclerolaena obliquicuspis	Limestone Bindii	
SASMDD0002	23-Sep-12	Senna artemisioides subsp. filifolia		
SASMDD0002	23-Sep-12	Senna artemisioides subsp. x coriacea		
SASMDD0002	23-Sep-12	Senna artemisioides subsp. x petiolaris		
SASMDD0002	23-Sep-12	Vittadinia cervicalis var. cervicalis		
SASMDD0002	23-Sep-12	Zygophyllum apiculatum	Callweed	
SASMDD0002	23-Sep-12	Zygophyllum aurantiacum subsp. aurantiacum		
SASMDD0001	21-Sep-12	Acacia wilhelmiana	Dwarf Nealie	
SASMDD0001	21-Sep-12	Austrostipa scabra subsp. scabra		
SASMDD0001	21-Sep-12	Austrostipa sp.		
SASMDD0001	21-Sep-12	Beyeria opaca	Dark Turpentine Bush	
SASMDD0001	21-Sep-12	Chenopodium desertorum subsp. desertorum		
SASMDD0001	21-Sep-12	Chenopodium desertorum subsp. rectum		
SASMDD0001	21-Sep-12	Daviesia benthamii subsp. acanthoclona		
SASMDD0001	21-Sep-12	Dianella revoluta var. revoluta		
SASMDD0001	21-Sep-12	Dodonaea bursariifolia	Low Hopbush	
SASMDD0001	21-Sep-12	Dodonaea viscosa subsp. angustissima		
SASMDD0001	21-Sep-12	Eremophila glabra subsp. murrayana		
SASMDD0001	21-Sep-12	Eucalyptus cyanophylla x Eucalyptus dumosa intergrade		
SASMDD0001	21-Sep-12	Eucalyptus dumosa	Bunurduk	
SASMDD0001	21-Sep-12	Eucalyptus dumosa subsp. dumosa		
SASMDD0001	21-Sep-12	Eucalyptus oleosa subsp. oleosa		
SASMDD0001	21-Sep-12	Eucalyptus socialis	Christmas Mallee	
SASMDD0001	21-Sep-12	Eucalyptus socialis subsp. socialis		
SASMDD0001	21-Sep-12	Eutaxia microphylla	Common Eutaxia	
SASMDD0001	21-Sep-12	Goodenia varia	Sticky Goodenia	
SASMDD0001	21-Sep-12	Grevillea huegelii	Comb Grevillea	
SASMDD0001	21-Sep-12	Halgania cyanea	Blue Halgania	
SASMDD0001	21-Sep-12	Maireana pentatropis	Erect Mallee Bluebush	
SASMDD0001	21-Sep-12	Maireana sp.		
SASMDD0001	21-Sep-12	Myoporum platycarpum	Bastard Sandalwood	
SASMDD0001	21-Sep-12	Olearia pimeleoides	Burrabunga	
SASMDD0001	21-Sep-12	Pimelea micrantha	Silky Rice-flower	
SASMDD0001	21-Sep-12	Prostanthera aspalathoides	Pixie Caps	
SASMDD0001	21-Sep-12	Ptilotus nobilis subsp. nobilis		
SASMDD0001	21-Sep-12	Sclerolaena diacantha	Grey Copper Burr	
SASMDD0001	21-Sep-12	Sclerolaena parviflora		
SASMDD0001	21-Sep-12	Senna artemisioides subsp. x petiolaris		
SASMDD0001	21-Sep-12	Templetonia rossii		
SASMDD0001	21-Sep-12	Triodia scariosa	Porcupine Grass	

Plot name	Date	Herbarium determination	Common name	SA Cons. Status
SASMDD0001	21-Sep-12	Vittadinia dissecta var. hirta		
SASMDD0001	21-Sep-12	Westringia rigida	Stiff Western Rosemary	
SASMDD0001	21-Sep-12	Zygophyllum aurantiacum subsp. aurantiacum		



Eucalyptus largiflorens woodland, Calperum SA



TERN
AusPlots

www.ausplots.org.au